

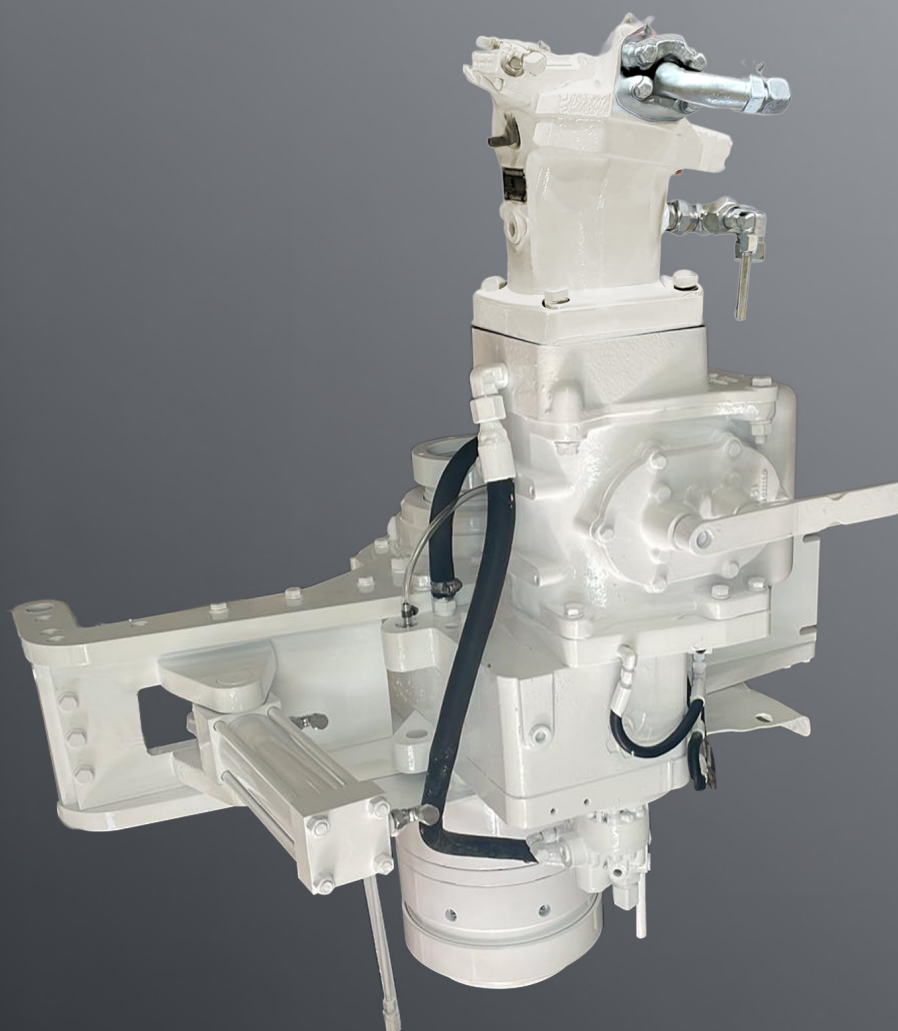
Bumeks Gear Industry Drive Module



BUMEKS[®]
GEAR INDUSTRY

BMC DRILL

ROTATION UNIT



DRILL HEAD PQ

BMC.3546088

LF230



Shift to Higher GEAR

BUMEKS[®]
GEAR INDUSTRY

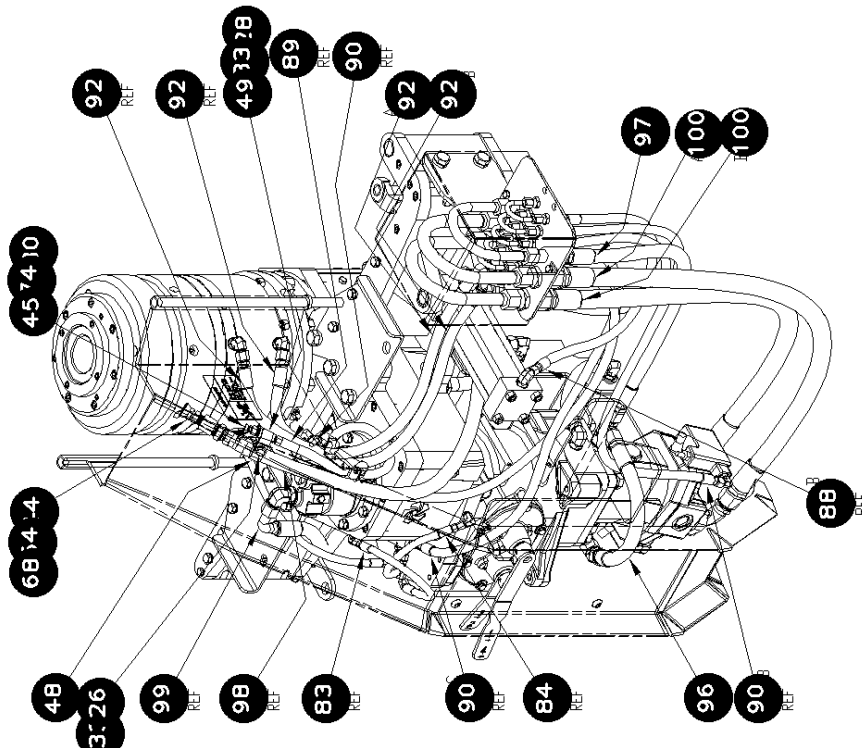
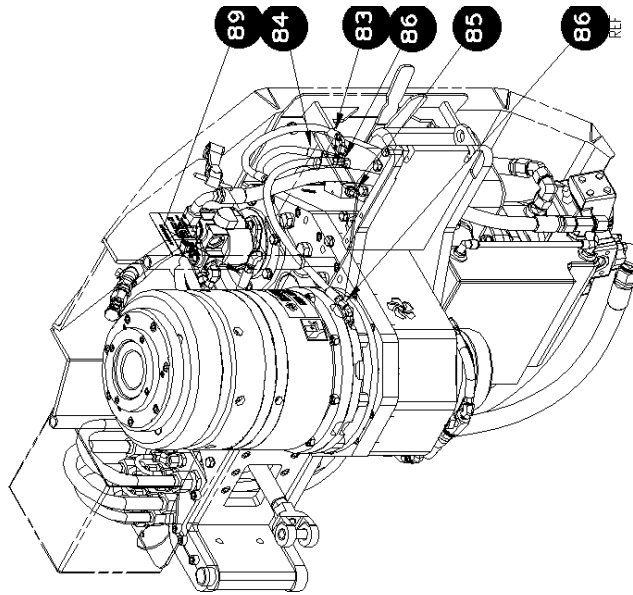




BUMEKS®
GEAR INDUSTRY

DRILL HEAD, PQ

BMC.3546088 PQ HEAD ASM LF230

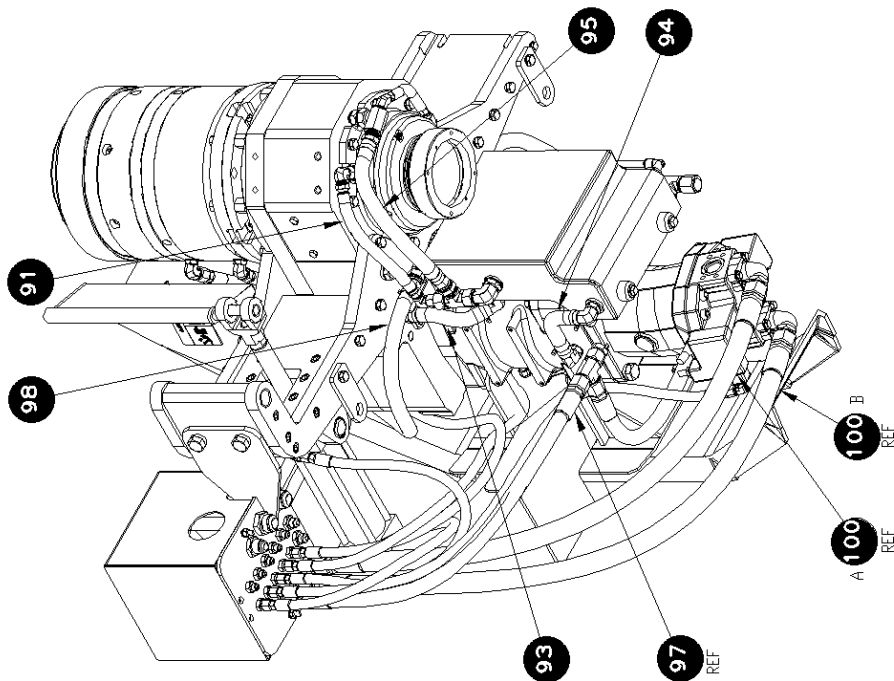
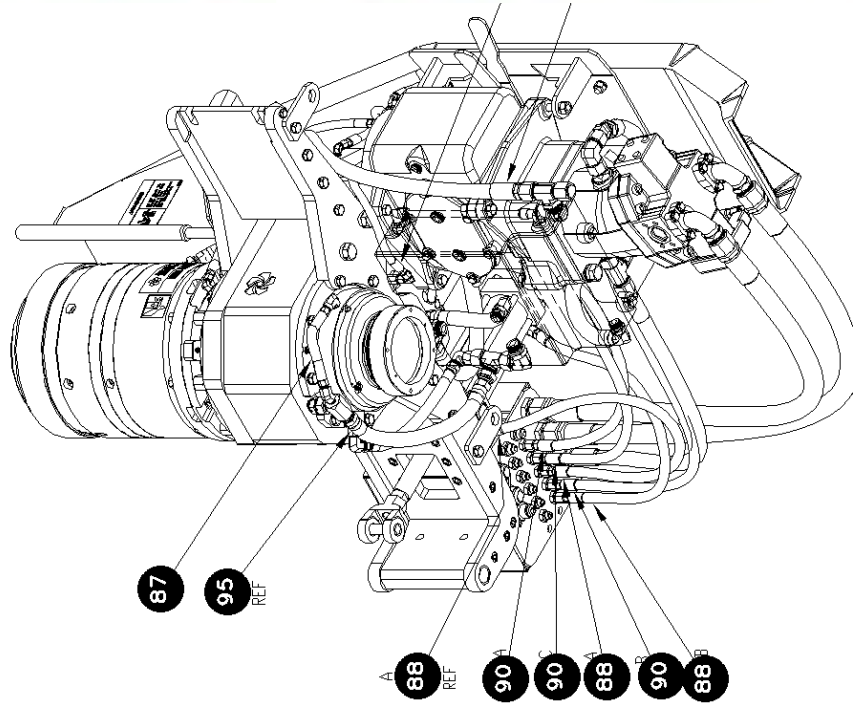




BUMEKS[®]
GEAR INDUSTRY

DRILL HEAD, PQ

BMC.3546088 PQ HEAD ASM LF230

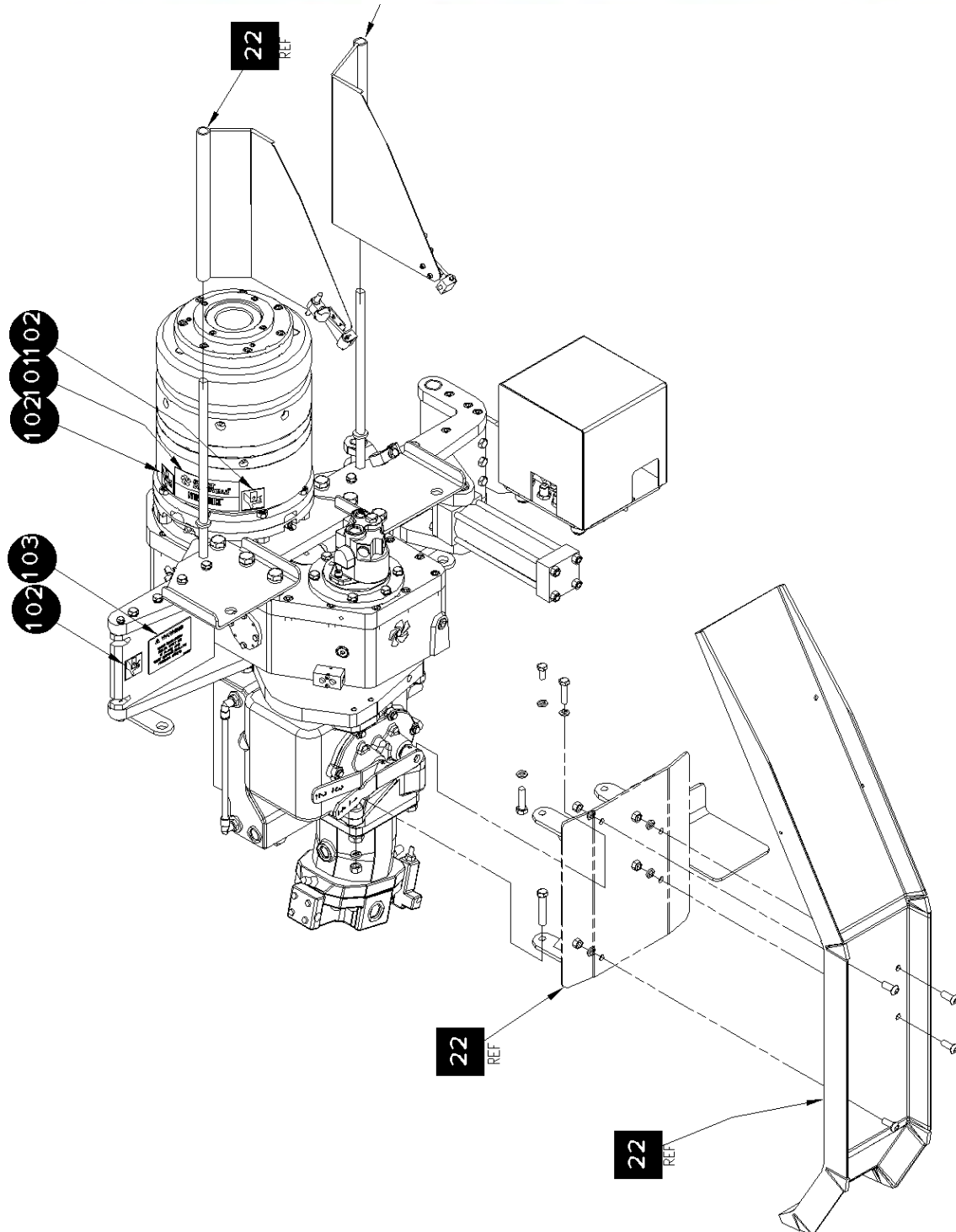




BUMEKS[®]
GEAR INDUSTRY

DRILL HEAD, PQ

BMC.3546088 PQ HEAD ASM LF230

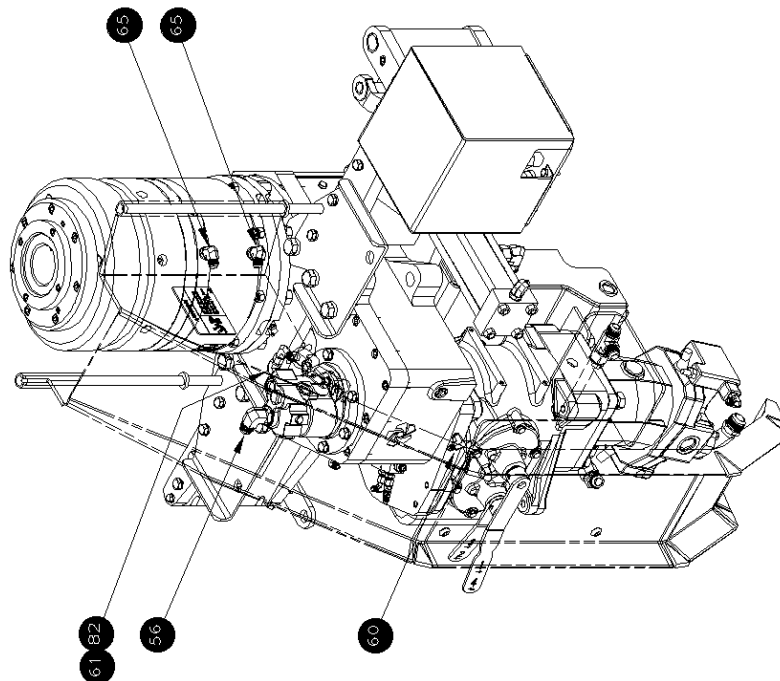
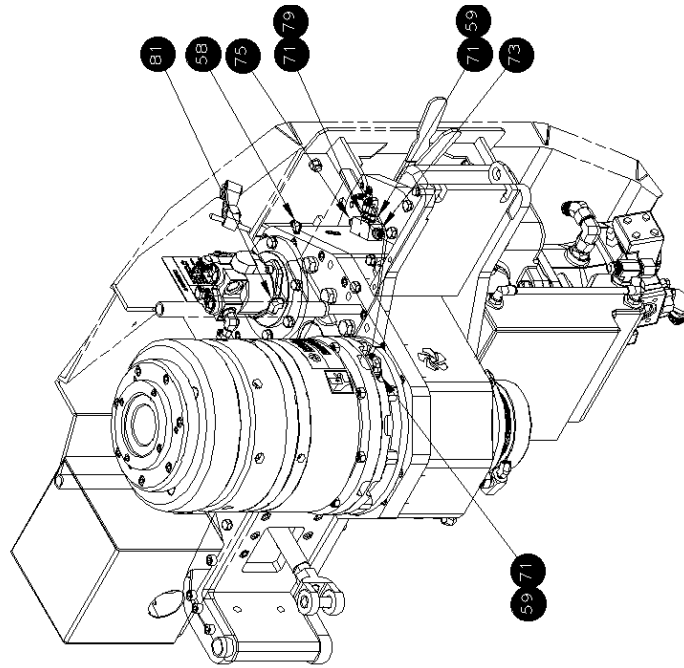




BUMEKS®
GEAR INDUSTRY

DRILL HEAD, PQ

BMC.3546088 PQ HEAD ASM LF230

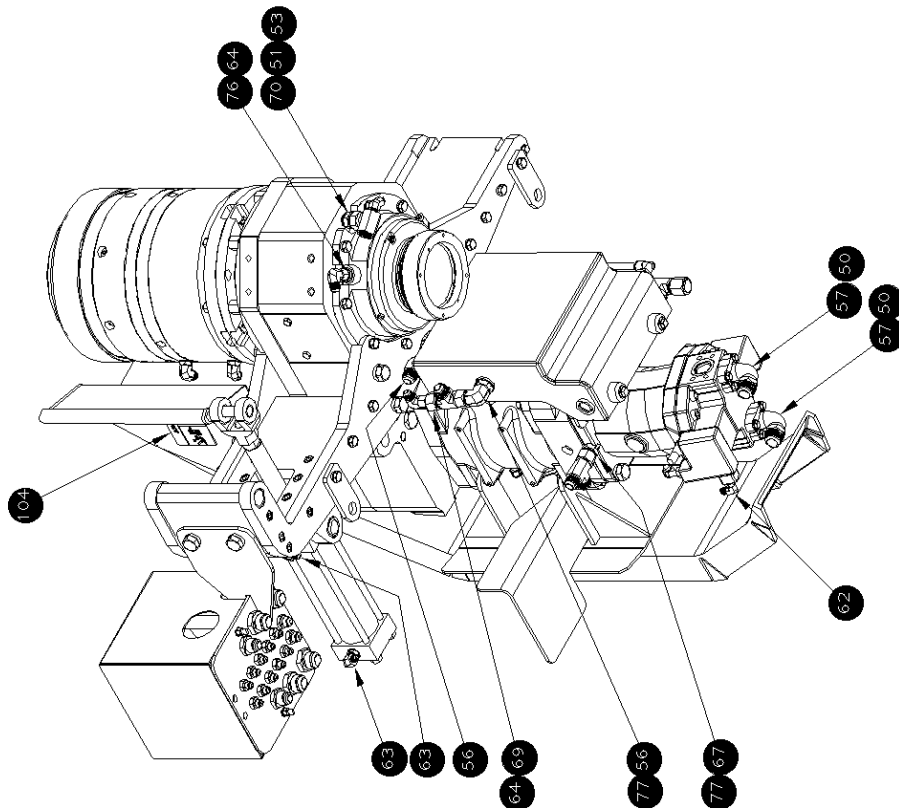
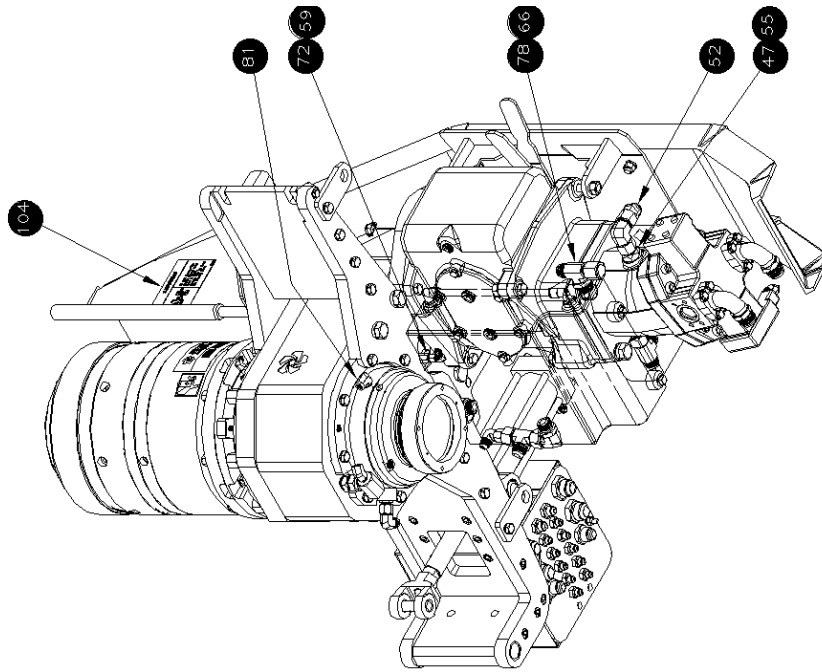




BUMEKS®
GEAR INDUSTRY

DRILL HEAD, PQ

BMC.3546088 PQ HEAD ASM LF230

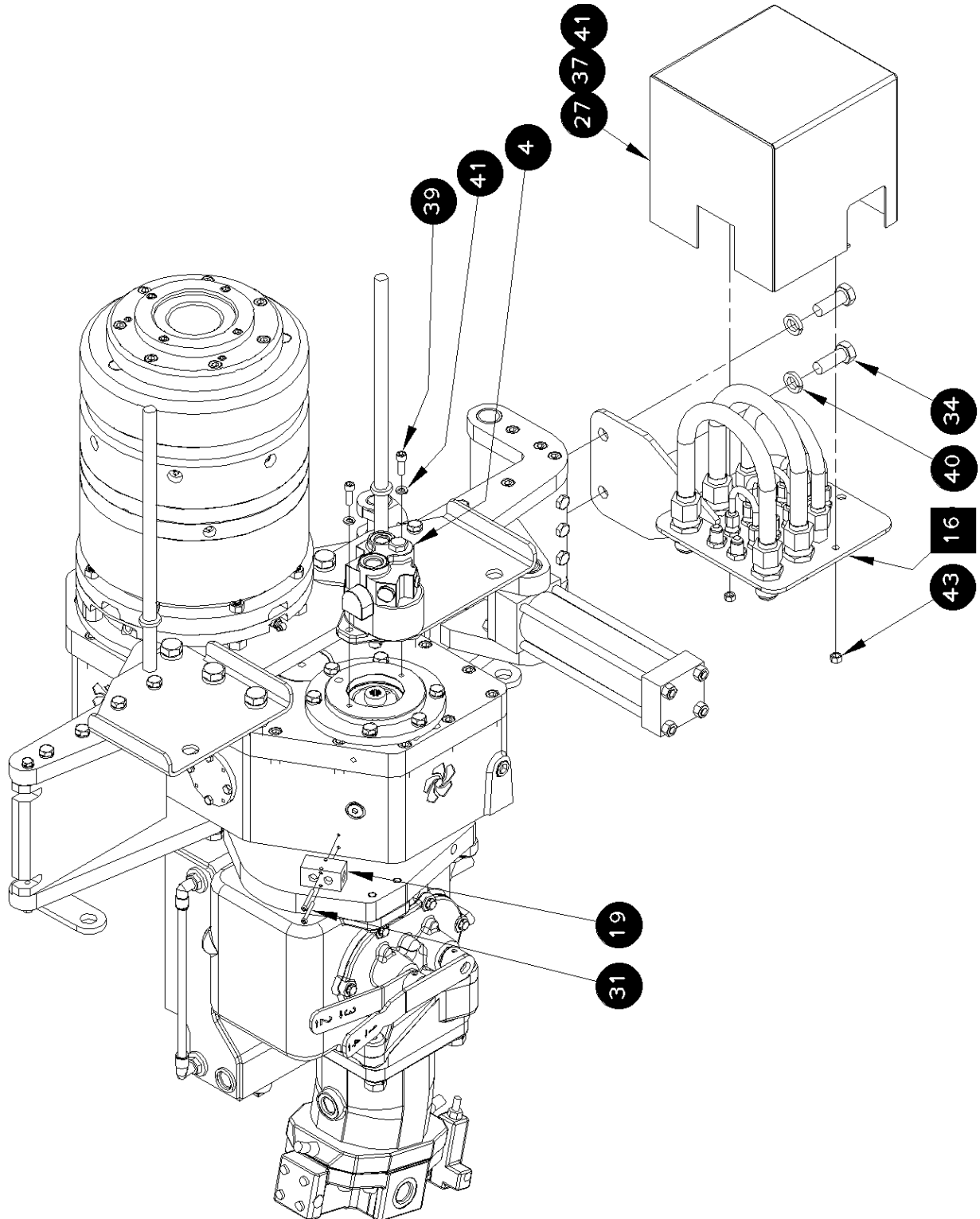




BUMEKS®
GEAR INDUSTRY

DRILL HEAD, PQ

BMC.3546088 PQ HEAD ASM LF230

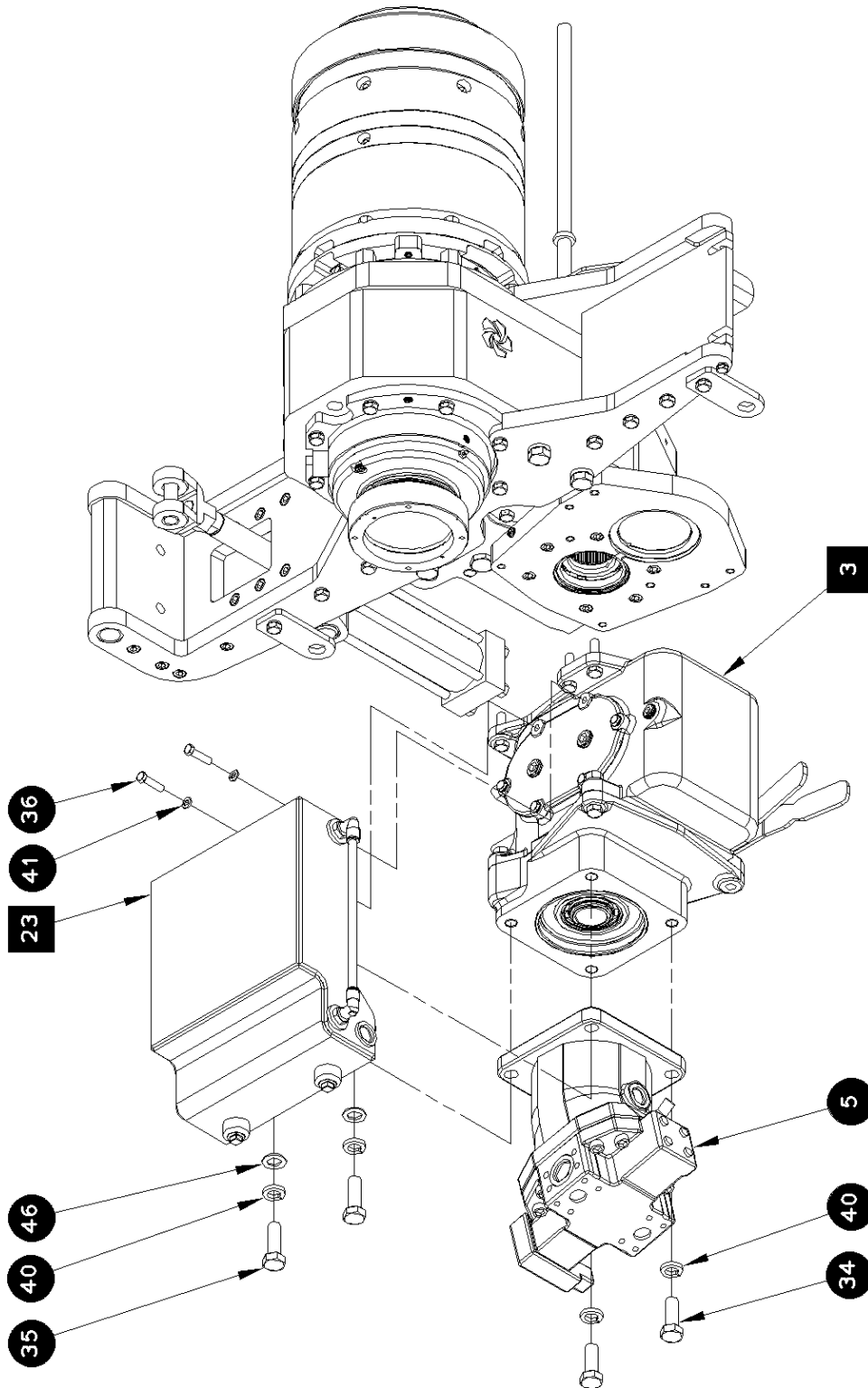




BUMEKS[®]
GEAR INDUSTRY

DRILL HEAD, PQ

BMC.3546088 PQ HEAD ASM LF230

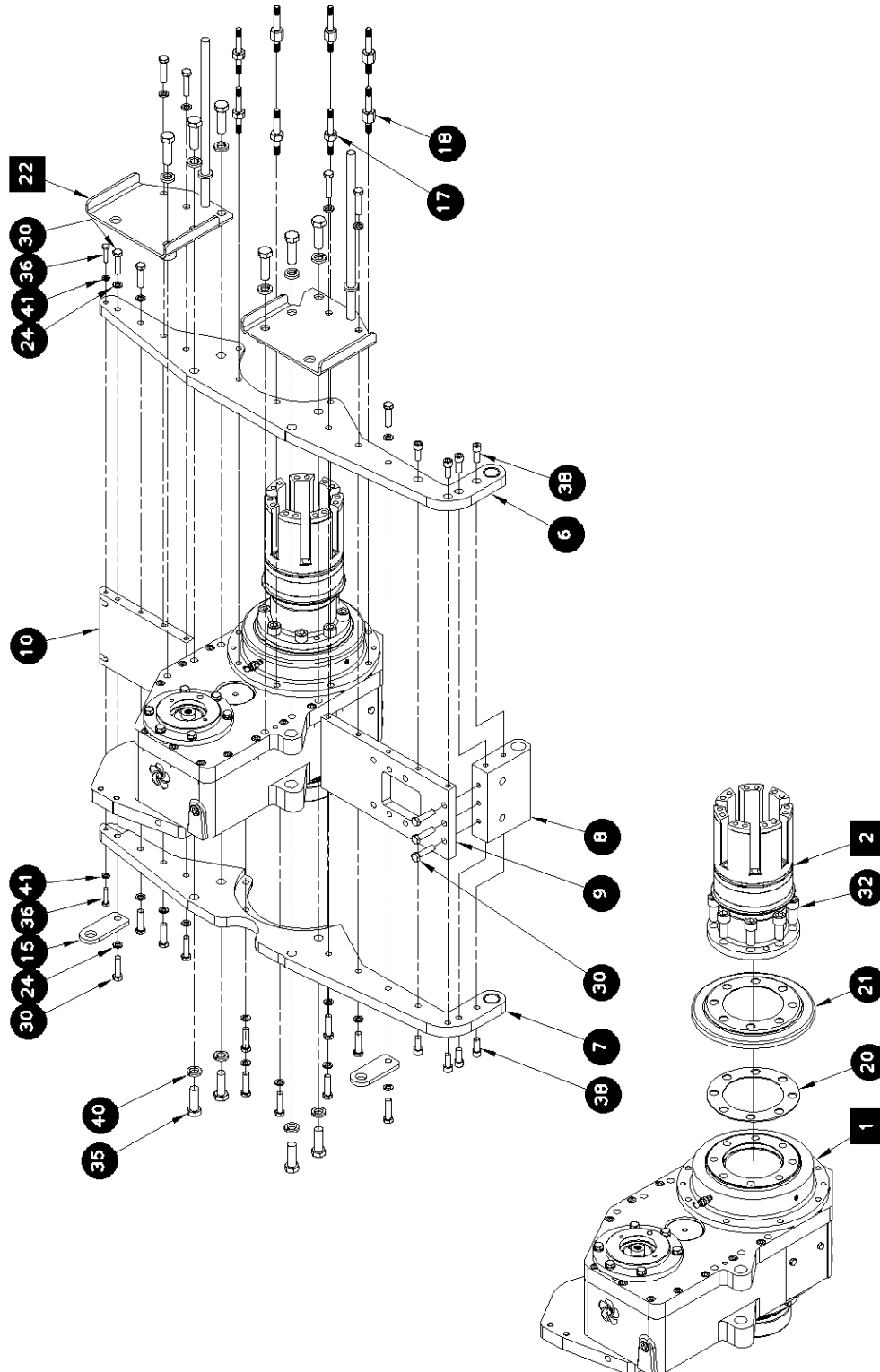




BUMEKS®
GEAR INDUSTRY

DRILL HEAD, PQ

BMC.3546088 PQ HEAD ASM LF230

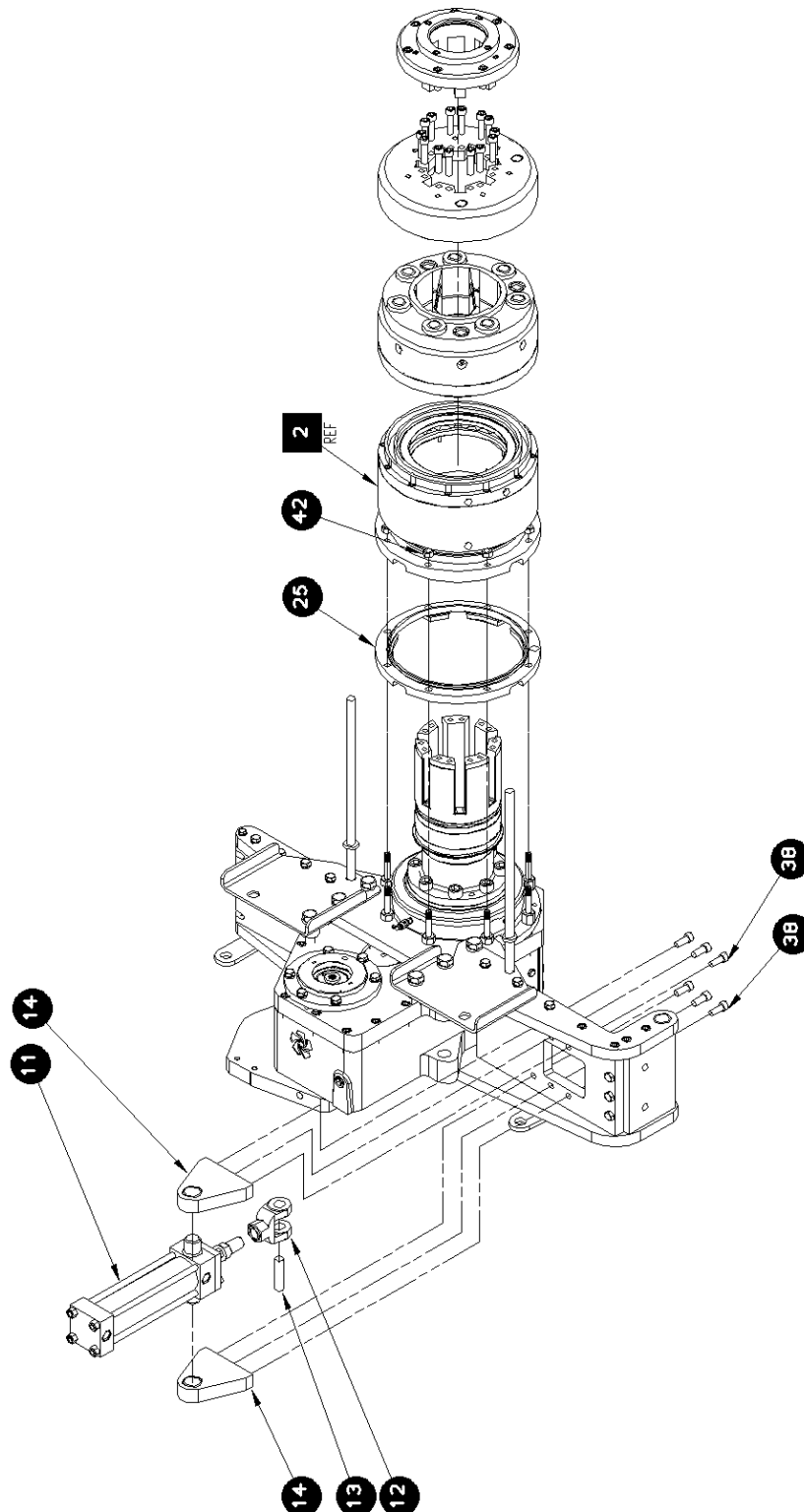




BUMEKS®
GEAR INDUSTRY

DRILL HEAD, PQ

BMC.3546088 PQ HEAD ASM LF230





BUMEKS[®]
GEAR INDUSTRY

DRILL HEAD, PQ

BMC.3546088 PQ HEAD ASM LF230

Item	Part No.	Name	Qty	Service
Ref	3546088	DRIVE MODULE, LF230 PQ	1	C
1		HEAD ASM, BASIC PQ (READ COMMENTS)	1	E
Comments for Part Num. 3546087				
3546087 HEAD ASM, PQ GEAR is not for sale - refer to:				
3546088DRIVE MODULE, LF230 PQ				
2	5404800	NITRO-CHUCK ASM, PQ	1	B
3	3540635	TRANSMISSION ASM, 4 SPEED REWORK	1	B
4	3547044	PUMP, HYD GEAR 4.92 LF230 PQ	1	B
5	3546689	MOTOR, HYD AXIAL PISTON LF230 (OBSOLETE, READ COMMENTS)	1	X
Comments for Part Num. 3546689				
SEAL KIT # 3541832				
MOTOR HAS BEEN MADE OBSOLETE BY MANUFACTURER, READ SERVICE BULLETIN 5406886 FOR FIELD REPLACEMENT DETAILS				
6	3546691	YOKE, LF230 UPPER MOUNTING	1	C
6A	3546626	BUSHING, 1.25 ID	1	C
7	3546690	YOKE, LF230 LOWER MOUNTING	1	C
7A	3546626	BUSHING, 1.25 ID	1	C
8	3546694	SPACER, HINGE SUPPORT	1	D
9	3546695	PLATE, P HEAD LATERAL SUPPORT	1	D
10	3546696	PLATE, P HEAD LATERAL SUPPORT	1	D
11	3546688	CYLINDER, HYD LF230 HEAD OPENER	1	C
11A	5401783	SEAL KIT, HYD CYLINDER 3546688	1	C
12	560034	CLEVIS, HYD CYLINDER	1	C
13	3544113	PIN, CYLINDER PIVOT C/W CIRCLIPS	1	C
14	3546697	LUG, CYLINDER TRUNION	2	C
14A	3546686	BUSHING, TRUNION	1	C
15	3547313	LUG, LF230 PQ HEAD LIFTING	2	D
16	3546647	HANGER ASM, LF230 HOSE	1	C
17	5405149	STUD, CHUCK SHORT HEX	4	D
18	5404330	STUD, CHUCK LONG HEX	4	C



BUMEKS[®]
GEAR INDUSTRY

DRILL HEAD, PQ

BMC.3546088 PQ HEAD ASM LF230

Item	Part No.	Name	Qty	Service
19	3540055	MANIFOLD, HYD (BARE) 2 PORT	1	D
20	5404329	SPACER	1	C
21	5403897	SHIELD, MUD	1	C
22		GUARD GROUP, LF230 PQ HEAD	1	E
23	3546873	RESERVOIR ASM, PQ HEAD LUBRICATION	1	E
24	44521	L/WASHER, SPLIT SPRING 1/2 ZP	14	F
25	5404327	ADAPTER, CHUCK	1	D
26	45767	C/SCR, HH 7/16-14 UNC X 1-1/2 G8 ZP	1	F
27	3545102	GUARD, BULKHEAD HOSE	1	D
28	44680	NUT, HEX PLAIN 7/16-14 UNC G8 ZP	1	F
29	44530	C/SCR, HH 1/2-13 UNC x 1-1/4 G8 ZP	1	F
30	44585	C/SCR, HH 1/2-13 UNC x 2 G8 ZP	21	F
31	3540014	C/SCR, SH #10-24 UNC x 1-3/4 A574 ZF	2	F
32	103243	C/SCR, SH 3/4-10 UNC X 1-3/4 A574 ZF	8	F
33	40012	WASHER, FLAT SAE 7/16 G8 ZP HARDENED	2	F
34	44748	C/SCR, HH 3/4-10 UNC X 2 G8 ZP	4	F
35	44517	C/SCR, HH 3/4-10 UNC x 2-1/4 G8 ZP	6	F
36	44536	C/SCR, HH 3/8-16 UNC x 1-1/2 G8 ZP	4	F
37	44593	C/SCR, HH 3/8-16 UNC X 1-1/4 G8 ZP	2	F
38	44550	C/SCR, SH 1/2-13 UNC x 1-1/4 A574 ZF	14	F
39	44630	C/SCR, SH 3/8-16 UNC x 1 A574 ZF	2	F
40	44523	L/WASHER, SPLIT SPRING 3/4 ZP	10	F
41	44520	L/WASHER, SPLIT SPRING 3/8 ZP	8	F
42	44525	NUT, HEX PLAIN 1/2-13 UNC G8 ZP	8	F
43	44527	NUT, HEX PLAIN 3/8-16 UNC G8 ZP	2	F
44	21393	BREATHER, TANK VENT 3/8 NPT	1	C
45	102803	BREATHER, 1/8 NPT	1	C
46	44612	WASHER, FLAT USS 3/4 G2 ZP	2	F
47	5404317	VALVE, HYD CHECK INLINE 12 MORB 12 MJ 5PSI	1	C
48	22811	P-CLAMP, VINYL COATED 1-1/16 ID	1	F



BUMEKS[®]
GEAR INDUSTRY

DRILL HEAD, PQ

BMC.3546088 PQ HEAD ASM LF230

Item	Part No.	Name	Qty	Service
49	26046	P-CLAMP, VINYL COATED 3/4 ID	1	D
50	5405427	SPLIT FLANGE KIT, 16 SAE CD61	2	C
51	3541297	ADAP, HYD 90 (REWORK)	1	F
52	33749	ADAP, HYD 45 12 MJ 12 FJS	1	F
53	36993	ADAP, HYD 45 4 MP 4 FP	1	F
54	31188	ADAP, HYD STR 8 MP 6 FP	1	F
55	43072	ADAP, HYD 90 12 MJ 12 FJS	1	F
56	36980	ADAP, HYD 90 12 MJ 12 MAORB	3	F
57	101531	ADAP, HYD 90 SWEPT 16 MJ 16 SAE FLG CD61	2	F
58	19141	ADAP, HYD 90 4 MJ 2 MP	1	F
59	33214	ADAP, HYD 90 4 MJ 4 FJS	3	F
60	28917	ADAP, HYD 90 4 MJ 4 MP	1	F
61	36998	ADAP, HYD 90 6 MJ 6 FJS	1	F
62	36478	ADAP, HYD 90 6 MJ 6 MAORB	1	F
63	3541910	ADAP, HYD 90 6 MJ 8 MORB ORIFICE [.030]	2	F
64	39690	ADAP, HYD 90 8 MJ 8 FJS	2	F
65	36457	ADAP, HYD 90 8 MJ 8 MAORB	2	F
66	40393	ADAP, HYD CAP NUT 12 FJ	1	F
67	36960	ADAP, HYD STR 12 MJ 10 MORB	1	F
68	33504	ADAP, HYD STR 12 MJ 8 FP	1	F
69	36452	ADAP, HYD STR 12 FJ 8 MJ	1	F
70	33065	ADAP, HYD STR 12 MP 12 MP	1	F
71	19972	ADAP, HYD STR 4 MJ 4 MP	3	F
72	33477	ADAP, HYD STR LONG 4 MJ 4 MP	1	F
73	39911	ADAP, HYD STR 4 MJ 6 MP	1	F
74	34075	ADAP, HYD STR 4 MP 2 FP	1	F
75	36469	ADAP, HYD STR 6 MJ 6 MP	1	F
76	36458	ADAP, HYD STR 8 MJ 8 MORB	1	F
77	33794	ADAP, HYD TEE 12 MJ 12 FJS 12 MJ	2	F
78	33680	ADAP, HYD TEE 12 MJ 12 MJ 12 MAORB	1	F



BUMEKS[®]
GEAR INDUSTRY

DRILL HEAD, PQ

BMC.3546088 PQ HEAD ASM LF230

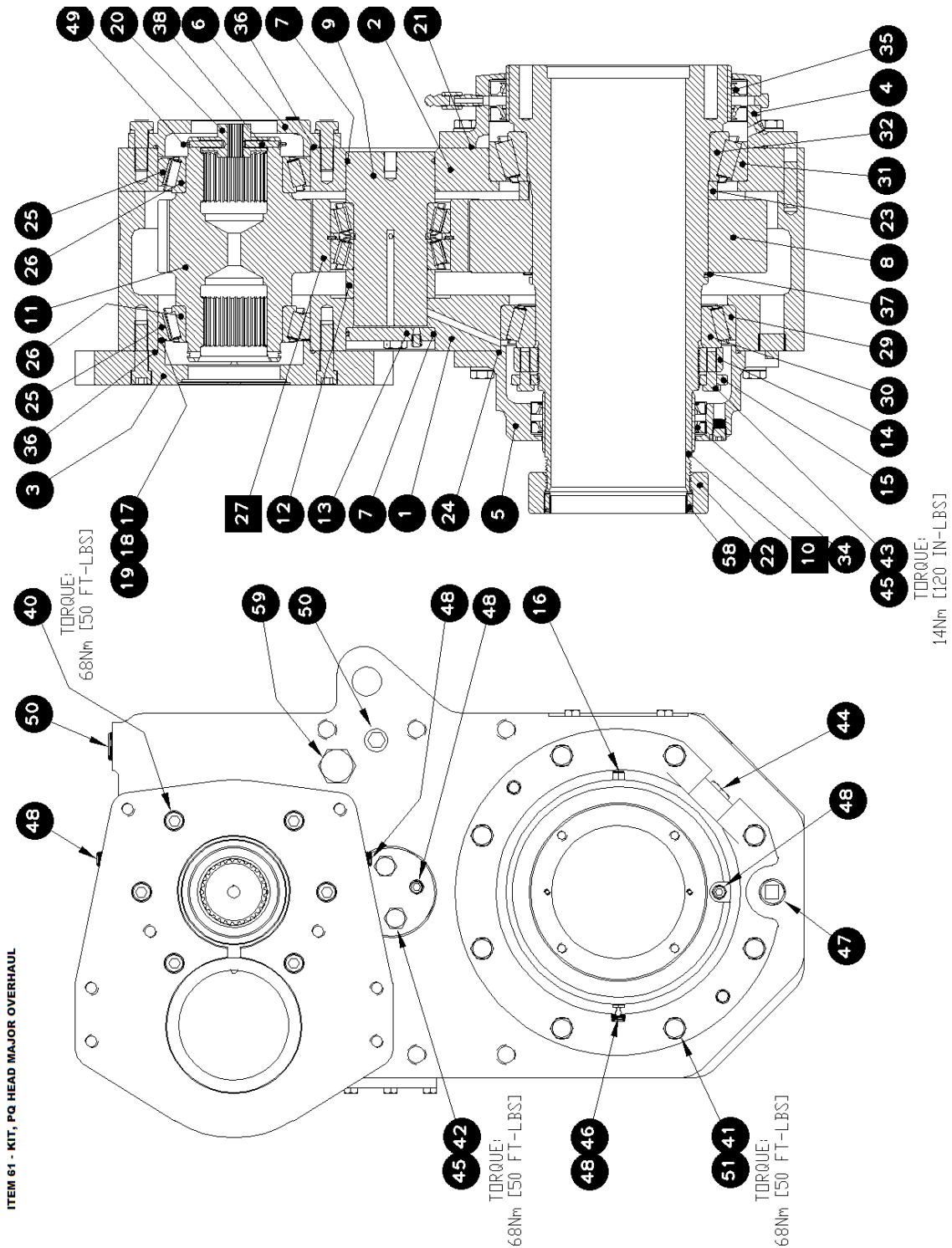
Item	Part No.	Name	Qty	Service
79	33791	ADAP, HYD TEE 4 MJ 4 FJS 4 MJ	1	F
80	40248	ADAP, HYD STR 4 FP 4 FP	1	F
81	34123	ADAP, HYD 90 4 MP 4 FP	2	F
82	33171	ADAP, HYD 90 6 MJ 8 MAORB	1	F
83	3540627	HOSE ASM, [1/4] x 23cm	1	D
84	3540628	HOSE ASM, [1/4] x 23cm	1	D
85	3540626	HOSE ASM, [1/4] x 41cm	1	D
86	61048	HOSE ASM, [1/4] x 66cm	1	D
87	5405540	HOSE ASM, [3/8] x 20cm	1	D
88	62281	HOSE ASM, [3/8] x 61cm	2	D
89	5404933	HOSE ASM, [3/8] x 68cm	1	D
90	60483	HOSE ASM, [3/8] x 122cm	3	D
91	5405542	HOSE ASM, [1/2] x 29cm	1	D
92	63261	HOSE ASM, [1/2] x 91cm	2	D
93	5405538	HOSE ASM, [3/4] x 25cm	1	D
94	5405536	HOSE ASM, [3/4] x 33cm	1	D
95	5405537	HOSE ASM, [3/4] x 44cm	1	D
96	5405539	HOSE ASM, [3/4] x 48cm	1	D
97	63283	HOSE ASM, [3/4] x 91cm	1	D
98	5405541	HOSE ASM, [3/4] x 98cm	1	D
99	34569	HOSE ASM, [3/4] x 94cm	1	D
100	5005505	HOSE ASM, [1] x 130cm	2	D
101	5402618	DECAL, NITRO CHUCK	0	D
102	3548150	DECAL, PINCH POINTS	0	D
103	3541257	DECAL, HEAD LOCK DOWN WARNING	0	D
104	3549567	DECAL, ROTATION ENTANGLEMENT (ENG)	0	D



BUMEKS®
GEAR INDUSTRY

DRILL HEAD, PQ

BMC.3546087 HEAD ASM, BASIC PQ (134 ROD)

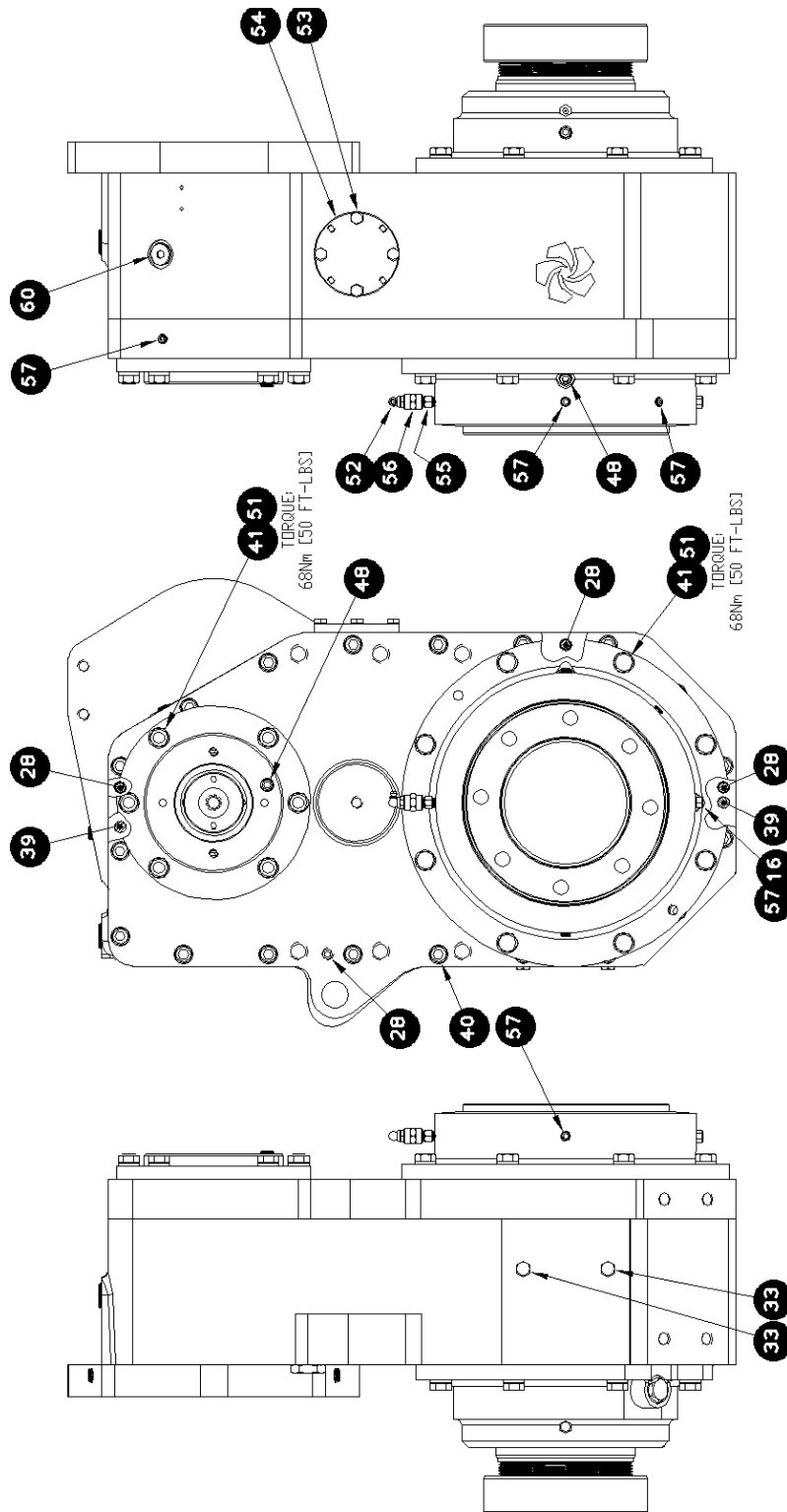




BUMEKS[®]
GEAR INDUSTRY

DRILL HEAD, PQ

BMC.3546087 HEAD ASM, BASIC PQ (134 ROD)





BUMEKS[®]
GEAR INDUSTRY

DRILL HEAD, PQ

BMC.3546087 HEAD ASM, BASIC PQ (134 ROD)

Item	Part No.	Name	Qty	Service
REF		HEAD ASM, BASIC PQ (READ COMMENTS)	1	E
Comments for Part Num. 3546087				
3546087 HEAD ASM, PQ GEAR is not for sale - refer to:				
3546088DRIVE MODULE, LF230 PQ				
REF	5000545	OVERHAUL KIT, PQ HEAD MAJOR (INCLUDES SEAL KIT)	1	C
REF	5000405	SEAL KIT, BASIC HEAD	1	B
1		HOUSING, MAIN	1	E
2	306474	COVER, HOUSING	1	D
3	306475	CARRIER-INPUT	1	D
4	306476	CAP, BEARING UPPER OUTPUT	1	D
5	306477	CAP, BEARING LOWER OUTPUT	1	D
6	3546714	COVER, LF230 PUMP MOUNTING	1	D
7	48761	O-RING, SAE 235 BUNA-N 70D	2	A
8	306468	GEAR, OUTPUT	1	C
9	306479	SHAFT, INTERMEDIATE IDLER	1	C
10	3546756	SPINDLE ASM, PQ HEAD 5.06 ID	1	C
11	306466	PINION AND SHAFT-INPUT	1	C
12	306481	SPACER, INTERMEDIATE	1	C
13	306482	PLATE-INTERMEDIATE LOCK	1	C
14	306483	RING-INNER LOCK	1	C
15	306484	RING-OUTER LOCK	1	C
16	5006702	GREASE FITTING, RELIEF 1/8 NPT	2	F
17	306487	SHIM-.005 THICK	3	A
18	306488	SHIM-.007 THICK	3	A
19	306489	SHIM-.020 THICK	1	A
20	3546712	ADAPTER ASM, PQ HEAD PUMP	1	B
21	3548734	O-RING, SAE 276 VITON 75D	1	A
22	3546085	NUT REWORK, SPINDLE PQ HEAD	1	C
23	306493	SPACER-OUTPUT	1	D



BUMEKS[®]
GEAR INDUSTRY

DRILL HEAD, PQ

BMC.3546087 HEAD ASM, BASIC PQ (134 ROD)

Item	Part No.	Name	Qty	Service
24	3548735	O-RING, SAE 270 VITON 75D	1	A
25	306585	BEARING CUP, TAPERED ROLLER OD 5.75	2	C
26	306587	BEARING CONE, TAPERED ROLLER ID 3.625"	2	C
27	3540433	GEAR ASM, INTERMEDIATE PQ HEAD	1	C
28	45676	S/SCR, SH 1/2-13 UNC x 3/4 F912 CUP PT ZP	4	F
29	306590	BEARING CUP, TAPERED ROLLER OD 8.875"	1	C
30	306592	BEARING CONE, TAPERED ROLLER ID 6.25"	1	C
31	306593	BEARING CUP, TAPERED ROLLER OD 9.75	1	C
32	306594	BEARING CONE, TAPERED ROLLER ID 6.875"	1	C
33	44538	C/SCR, HH 3/8-16 UNC x 1/2 G8 ZP	2	F
34	306599	SEAL, OIL ID 5.75" OD 6.625"	2	A
35	306600	SEAL, OIL ID 8.5" OD 9.75	2	A
36	3548736	O-RING, SAE 257 VITON 75D	2	A
37	306603	CIRCLIP, EXTERNAL 6.75"	1	C
38	3546713	DOWEL PIN, 1/4 DIA. x 1 1/4 LG	2	B
39	26843	DOWEL PIN, 1/2 DIA X 1-3/4 LG	2	F
40	46102	C/SCR, SH 1/2 UNC x 1-3/4 A574 ZF	25	F
41	44510	C/SCR, HH 1/2-13 UNC X 1-1/2 G8 ZP	22	F
42	306606	C/SCR, HH 1/2-13 UNC x 1-1/4 DRILLED HEAD	2	C
43	306608	C/SCR, HH 3/8-16 UNC x 1-1/4 DRILLED HEAD	6	C
44	39572	ADAP, HYD PLUG HH 8 MORB	1	F
45	44766	WIRE, O.47 DIA SAFETY	A/R	A
46	16634	GREASE FITTING, STR 1/8-27 NPT	1	F
47	3540054	PLUG, MAGNETIC SH 3/4 NPT SQ RECESS	1	D
48	22079	ADAP, HYD PLUG SH 1/4 NPT	7	F
49	306604	CIRCLIP, EXTERNAL 3.625"	1	C
50	28051	ADAP, HYD PLUG SH 3/4 MP	2	F
51	44521	L/WASHER, SPLIT SPRING 1/2 ZP	22	F
52	17273	GREASE FITTING, 90 DEG 1/8"NPT	1	F
53	44551	C/SCR, HH 5/16-18 UNC x 3/4 G8 ZP	4	F



BUMEKS[®]
GEAR INDUSTRY

DRILL HEAD, PQ

BMC.3546087 HEAD ASM, BASIC PQ (134 ROD)

Item	Part No.	Name	Qty	Service
54	100327	COVER, SERVICE	1	D
55	34056	ADAP, HYD STR 2 MP 2 MP	1	F
56	34099	ADAP, HYD STR 2 FP 2 FP	1	F
57	100976	ADAP, HYD PLUG SH 2 MP	4	F
58	44661	S/SCR, SH 1/4-20 UNC x 3/4 F912 CUP PT ZP	2	F
59	36596	ADAP, HYD PLUG HH 12 MORB	1	F
60	49229	ADAP, HYD PLUG SH 8 MORB	1	F

Comments for Page: 3546087 HEAD ASM, BASIC PQ (134 ROD)

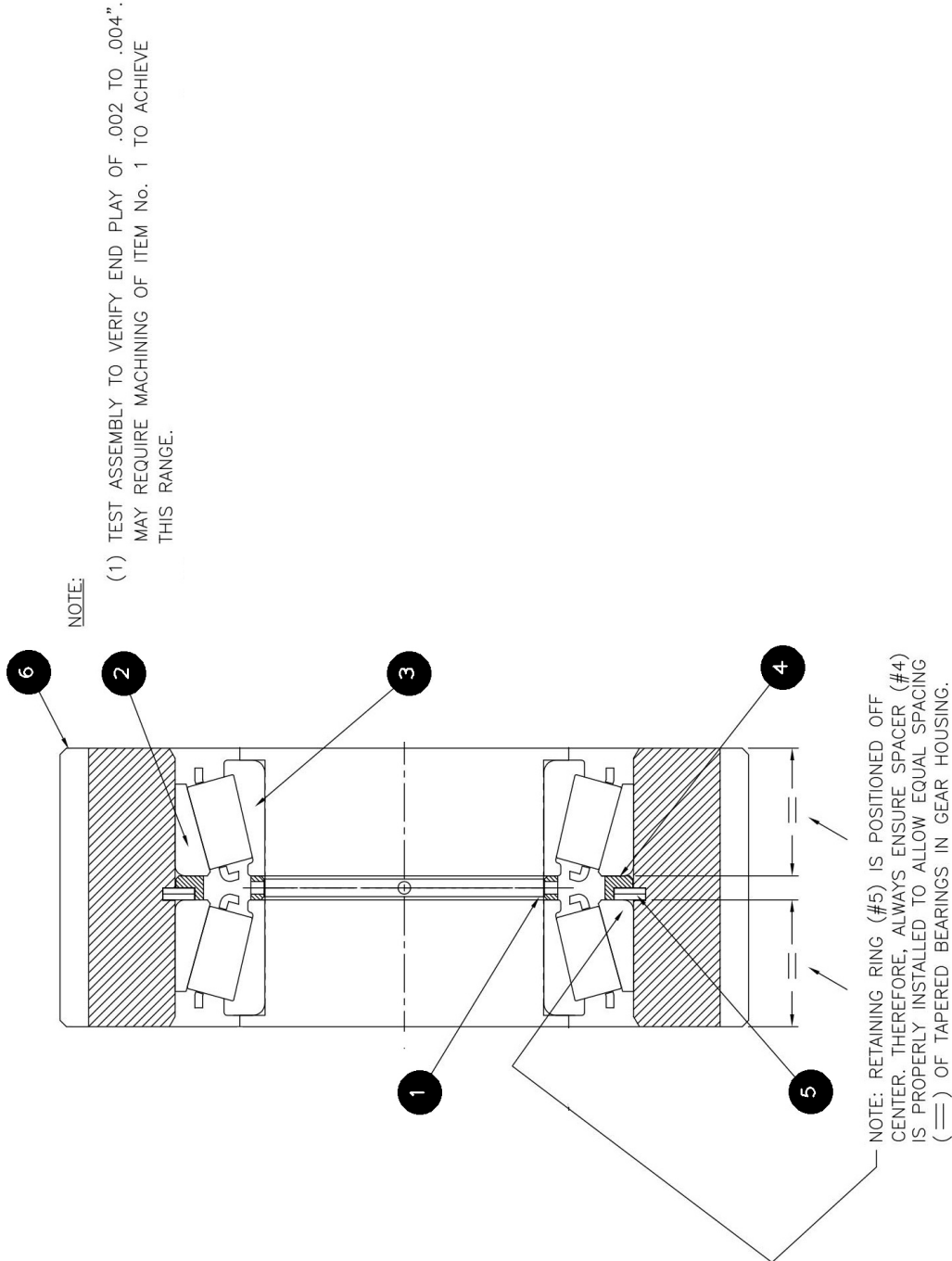
(#7 48761)(#17 306487)(#18 306488)(#19 306489)(#21 3548734)(#24 3548735)(#34 306599)(#35 306600)(#36 3548736)SUPPLIED IN BASIC HEAD
SEAL KIT # 5000405



BUMEKS[®]
GEAR INDUSTRY

DRILL HEAD, PQ

BMC.3540433 GEAR, INTERMEDIATE
ASSEMBLY (PQ HEAD)





DRILL HEAD, PQ

BMC.3540433 GEAR, INTERMEDIATE ASSEMBLY (PQ HEAD)

Item	Part No.	Name	Qty	Service
Ref	3540433	GEAR ASM, INTERMEDIATE PQ HEAD	1	C
1	306492	SPACER, BEARING (REWORK)	1	C
2	306588	BEARING CUP, TAPERED ROLLER OD 115	2	C
3	306589	BEARING CONE, TAPERED ROLLER	2	B
4	306597	SPACER, BEARING CUP	1	C
5	3540005	CIRCLIP, INTERNAL 4.5" HOUSING	1	B
6		GEAR, INTERMEDIATE (ORDER ASM)	1	E

Comments for Page: 3540433 GEAR, INTERMEDIATE ASSEMBLY (PQ HEAD)

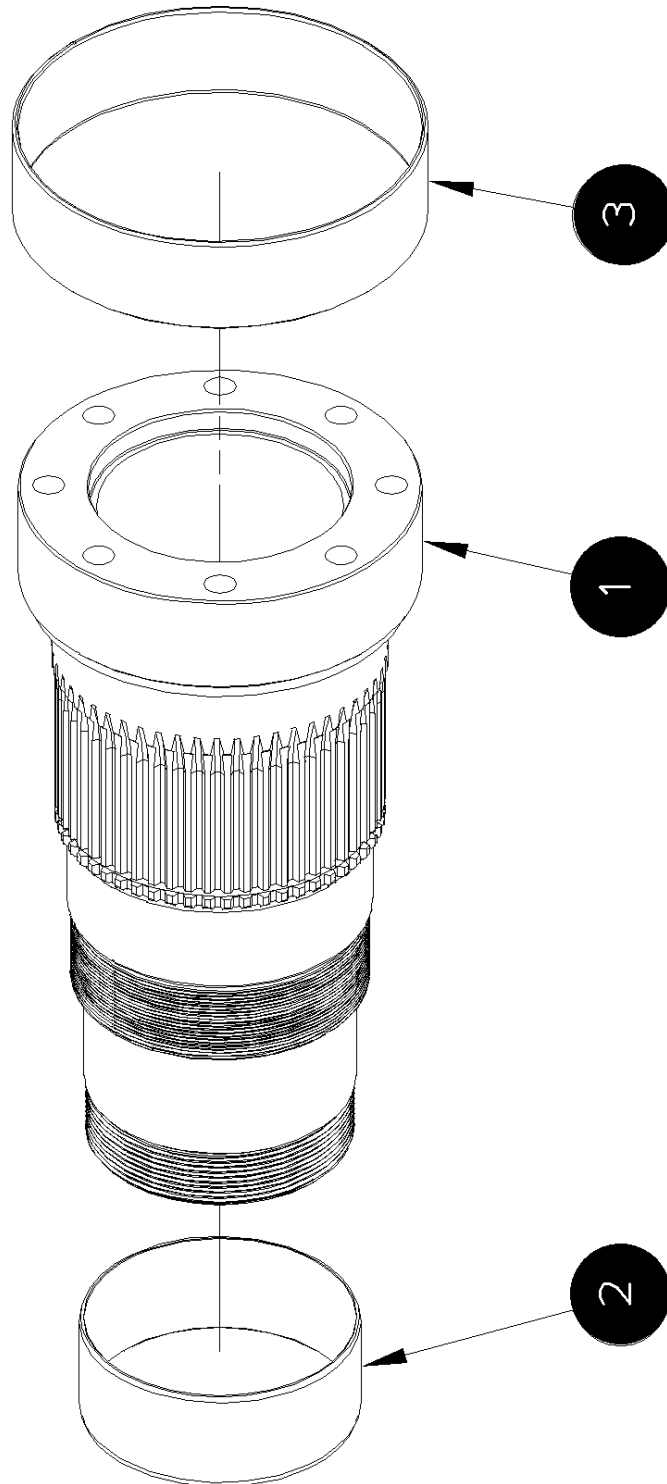
(#1 306492)(#2 306588)(#3 306589)(#5 3540005)INCLUDED IN GEARBOX OVERHAUL KIT # 5000545



BUMEKS[®]
GEAR INDUSTRY

DRILL HEAD, PQ

BMC.3546756 SPINDLE ASM,
PQ HEAD 5.06 ID





BUMEKS[®]
GEAR INDUSTRY

DRILL HEAD, PQ

BMC.3546756 SPINDLE ASM,
PQ HEAD 5.06 ID

Item	Part No.	Name	Qty	Service
Ref	3546756	SPINDLE ASM, PQ HEAD 5.06 ID	1	C
1		SPINDLE, (BARE) ORDER ASM 3546756	1	E
2	3546752	WEAR SLEEVE, PQ SPINDLE SMALL	1	B
3	306494	WEAR SLEEVE, PQ SPINDLE LARGE	1	B



BUMEKS®
GEAR INDUSTRY

DRILL HEAD, PQ

BMC.3546455M-F060 OC HEAD LOWER
SPINDLE BUSHING (5.06 SPINDLE)





BUMEKS[®]
GEAR INDUSTRY

DRILL HEAD, PQ

BMC.3546455M-F060 OC HEAD LOWER
SPINDLE BUSHING (5.06 SPINDLE)

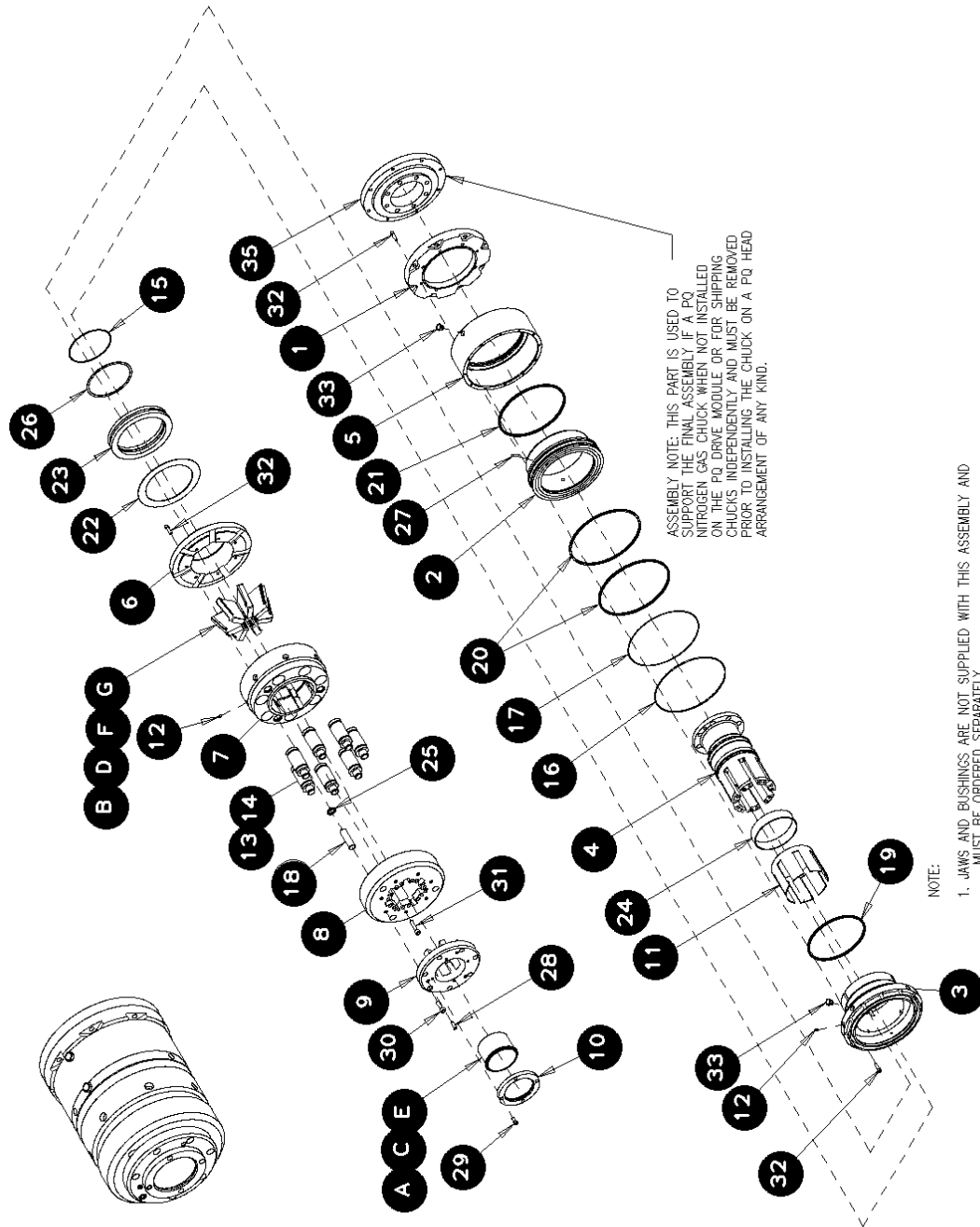
Item	Part No.	Name	Qty	Service
1	3546867	BUSHING, LOWER HEAD BQ 5.06 SPINDLE	1	D
2	3546475	BUSHING, LOWER HEAD NQ/BW 5.06 SPINDLE	1	B
3	3546476	BUSHING, LOWER HEAD HQ/NW 5.06 SPINDLE	1	B



BUMEKS[®]
GEAR INDUSTRY

DRILL HEAD, PQ

BMC.3546086 CHUCK ASM, PQ 5-1/16"
SPINDLE PRIOR TO 2014

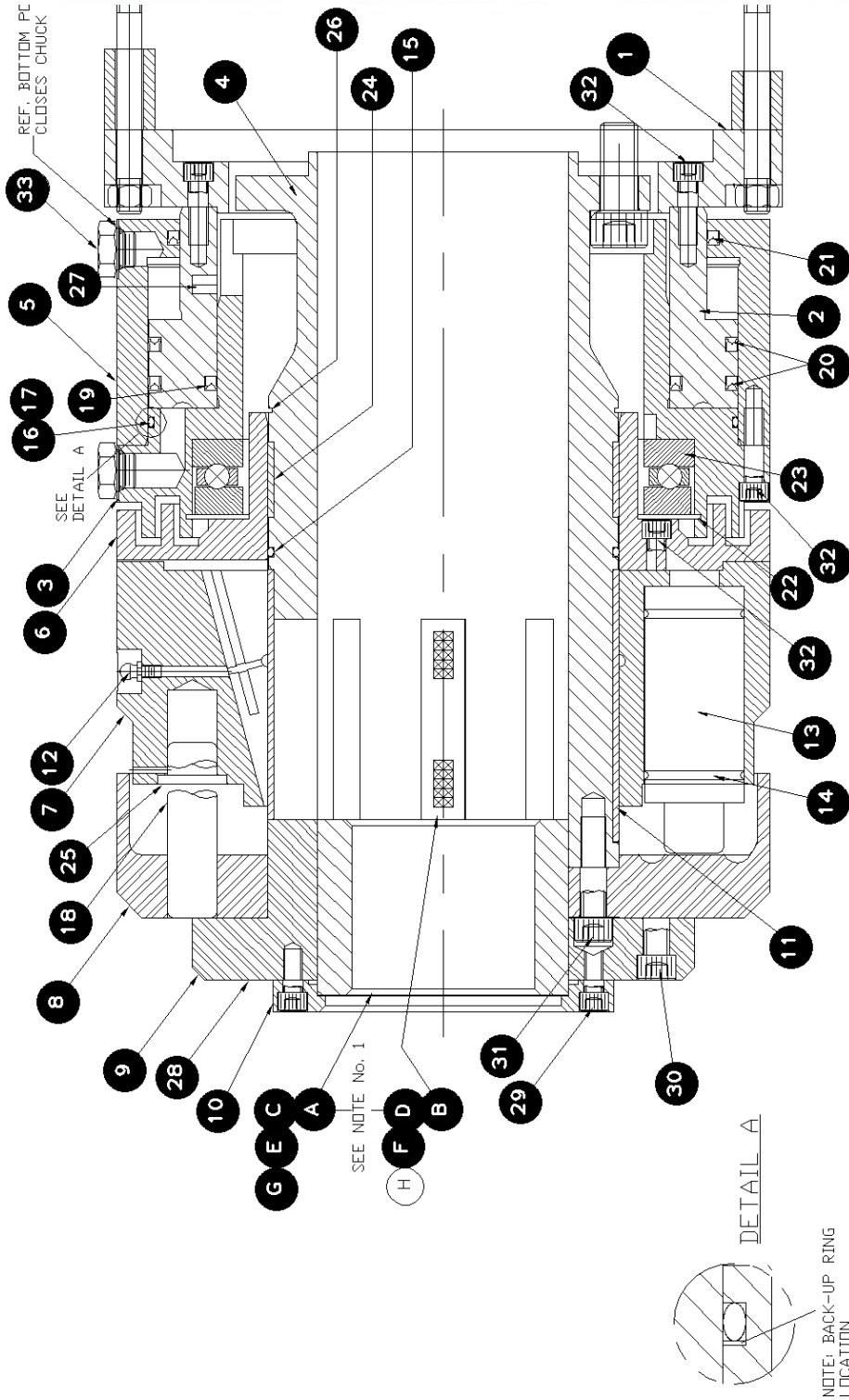




BUMEKS
GEAR INDUSTRY

DRILL HEAD, PQ

BMC.3546086 CHUCK ASM, PQ 5-1/16"
SPINDLE PRIOR TO 2014





BUMEKS[®]
GEAR INDUSTRY

DRILL HEAD, PQ

BMC.3546086 CHUCK ASM, PQ 5-1/16"
SPINDLE PRIOR TO 2014

Item	Part No.	Name	Qty	Service
REF	3546086	CHUCK ASM, PQ NITROGEN 5-1/16" SPINDLE (Obsolete - refer to comment)	1	X
Comments for Part Num. 3546086				
3546086 CHUCK GROUP, PQ N/CHUCK is obsolete and replaced.				
Refer to 5405590 FIELD KIT, PQ CHUCK REPLACEMENT THIS FIELD KIT IS FOR USE ON LF PQ DRILLS MANUFACTURED PRIOR TO 2014 TO REPLACE CHUCK ASSEMBLIES 3546086 AND 3542840.				
1	3543490	ADAPTER, MTG CHUCK NITRO	1	C
2	3543479	PISTON, PQ CHUCK NITRO	1	C
3	3543478	INNER CYLINDER, CHUCK NITRO	1	C
4	3546081	SPINDLE, PQ CHUCK 5.06 ID	1	C
5	3543480	CYLINDER, OUTER CHUCK NITRO	1	C
6	3543481	LABRINTH SEAL, CHUCK NITRO	1	C
7	3543515	BOWL, PQ CHUCK NITRO	1	C
8	3546083	RETAINER, SPRING PQ 5.06 ID	1	C
9	3546084	RETAINER, JAW PQ 5.06 ID	1	C
10	3543509	RETAINER, BUSHING GUIDE	1	B
11	3543514	SLEEVE, WEAR SPINDLE UPPER	1	B
12	17447	GREASE NIPPLE, STR 1/4-28 NPTF	9	F
13	5407485	GAS SPRING, STANDARD DUTY N/CHUCK (REFER TO SERVICE BULLETIN 5407576)	7	B
14	3543519	O-RING, SAE 133 BUNA-N 70D	7	F
15	3543503	O-RING, SAE 261 ID: 6-3/4" CS: 0.139 BUNA-N 70	1	A
16	3543505	O-RING, SAE 276 BUNA-N 70D	1	A
17	3543506	RING, BACKUP PQ CHUCK CYLINDER	1	A
18	3543510	DOWEL PIN, 1 x 3-1/2	3	B
19	3543500	CUP SEAL, INNER URETHANE	1	A
20	3543501	CUP SEAL, OUTER URETHANE	2	A
21	3543502	CUP SEAL, PISTON URETHANE	1	A
22	3543499	CIRCLIP, SPIRAL INTERNAL 10"	1	B
23	3543496	BEARING, THRUST BALL PQ CHUCK	1	B



BUMEKS[®]
GEAR INDUSTRY

DRILL HEAD, PQ

BMC.3546086 CHUCK ASM, PQ 5-1/16"
SPINDLE PRIOR TO 2014

Item	Part No.	Name	Qty	Service
24	3543507	RING, SPINDLE WEAR LOWER	1	B
25	3543508	SEAL, GUIDE PIN OIL	3	A
26	3543524	CIRCLIP, SPIRAL EXTERNAL 7"	1	B
27	3547565	DOWEL PIN, GROOVED 3/8 DIA x 1 LG	3	B
28	3543521	S/SCR, SH 1/2-13 UNC x 1-1/4 F912 CUP PT BLK	3	F
29	44570	C/SCR, SH 3/8-16 UNC x 3/4 A574 ZF	4	F
30	44531	C/SCR, SH 1/2-13 UNC x 1-1/2 A574 ZF	7	F
31	47226	C/SCR, SH 1/2-20 UNF x 2 A574 BLK	14	F
32	46527	C/SCR, SH 3/8-16 UNC x 1-1/4 A574 ZF	27	F
33	39572	ADAP, HYD PLUG HH 8 MORB	2	F
34		GREASE, ULTRA DUTY 14oz TUBE	1	E
35		SUPPORT PLT, PQ CHUCK	REF	E
<p>Comments for Part Num. 3543774</p> <p>THIS COMPONENT ONLY USED AS A FIXTURE TO SHIP A CHUCK ASSEMBLY- NOT REQUIRED ON DRILL</p>				
A	3546862	BUSHING, GUIDE UPPER BQ 5.06 SPINDLE	REF	C
B	3544188	JAW SET, BRQHP	REF	
C	3546861	BUSHING, GUIDE UPPER BW/NQ 5.06 SPINDLE	REF	B
D	3543471	JAW SET, BW CSG, NRQHP ROD	REF	
E	3546863	BUSHING, GUIDE UPPER NW/HQ 5.06 SPINDLE	REF	B
F	3543472	JAW SET, HW CSG, HRQHP ROD	REF	
G	3543473	JAW SET, HWT CSF, PQ ROD	REF	

Comments for Page: 3546086 CHUCK ASM, PQ 5-1/16" SPINDLE PRIOR TO 2014

(#13 3543497)GAS SPRING SEAL KIT P/N 3543498 - (7 REQUIRED)

(#14 3543519)(#15 3543503)(#16 3543505)(#17 3543506)(#19 3543500)(#20 3543501)(#21 3543502)(#25 3543508)SUPPLIED IN CHUCK SEAL KIT
3543526

(#34 3543876)(#35 3543774)(#A 3546862)(#B 3544188)(#C 3546861)(#D 3543471)(#E 3546863)(#F 3543472)(#G 3543473)NOT SUPPLIED WITH
THIS ASSEMBLY - MUST BE ORDERED SEPARATELY

(#34 3543876)Supplied w/Power Unit

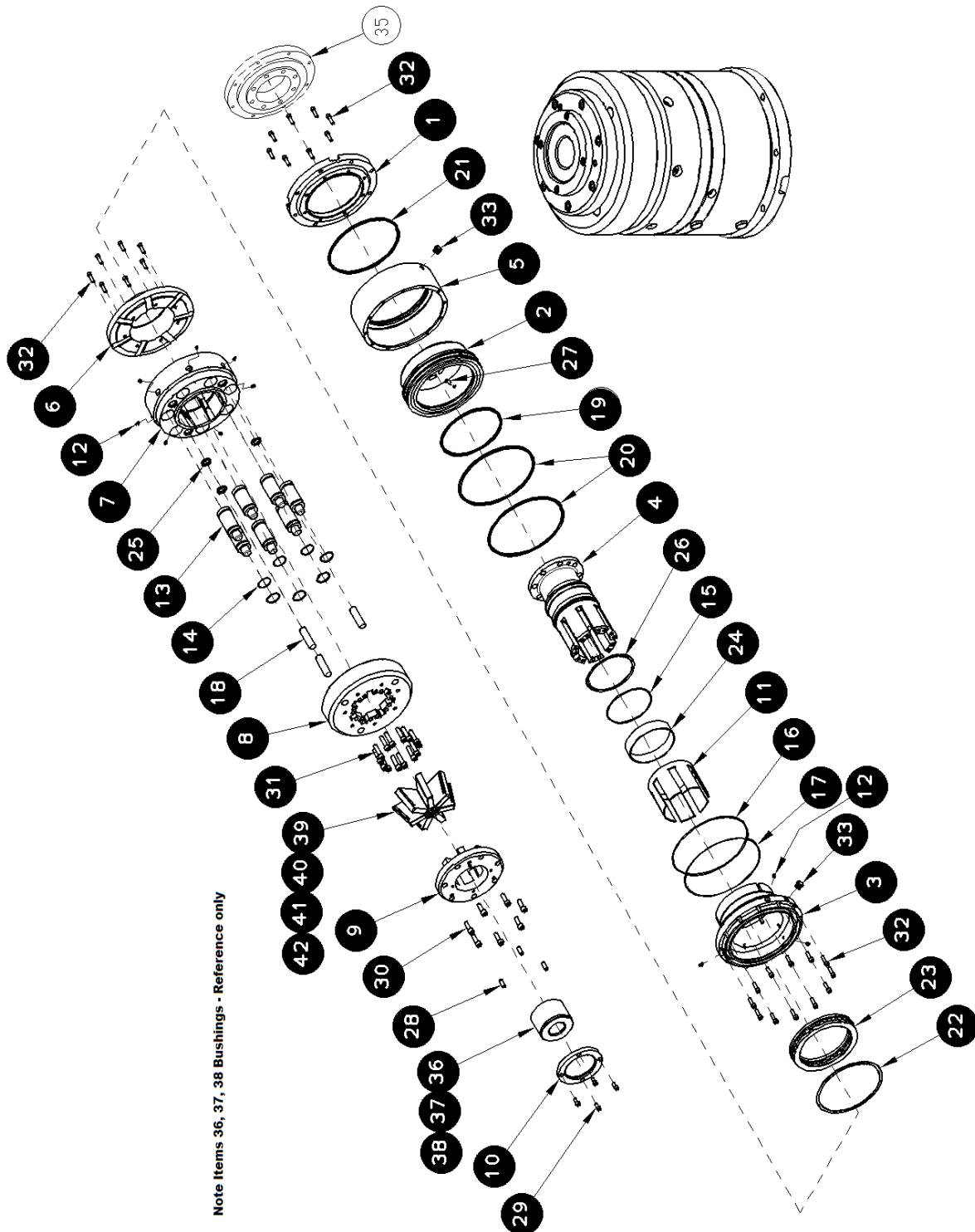
3546086 OBSOLETE SUPERSEDE 5406325



BUMEKS®
GEAR INDUSTRY

DRILL HEAD, PQ

BMC.5404800 CHUCK ASM, PQ AFTER 2014



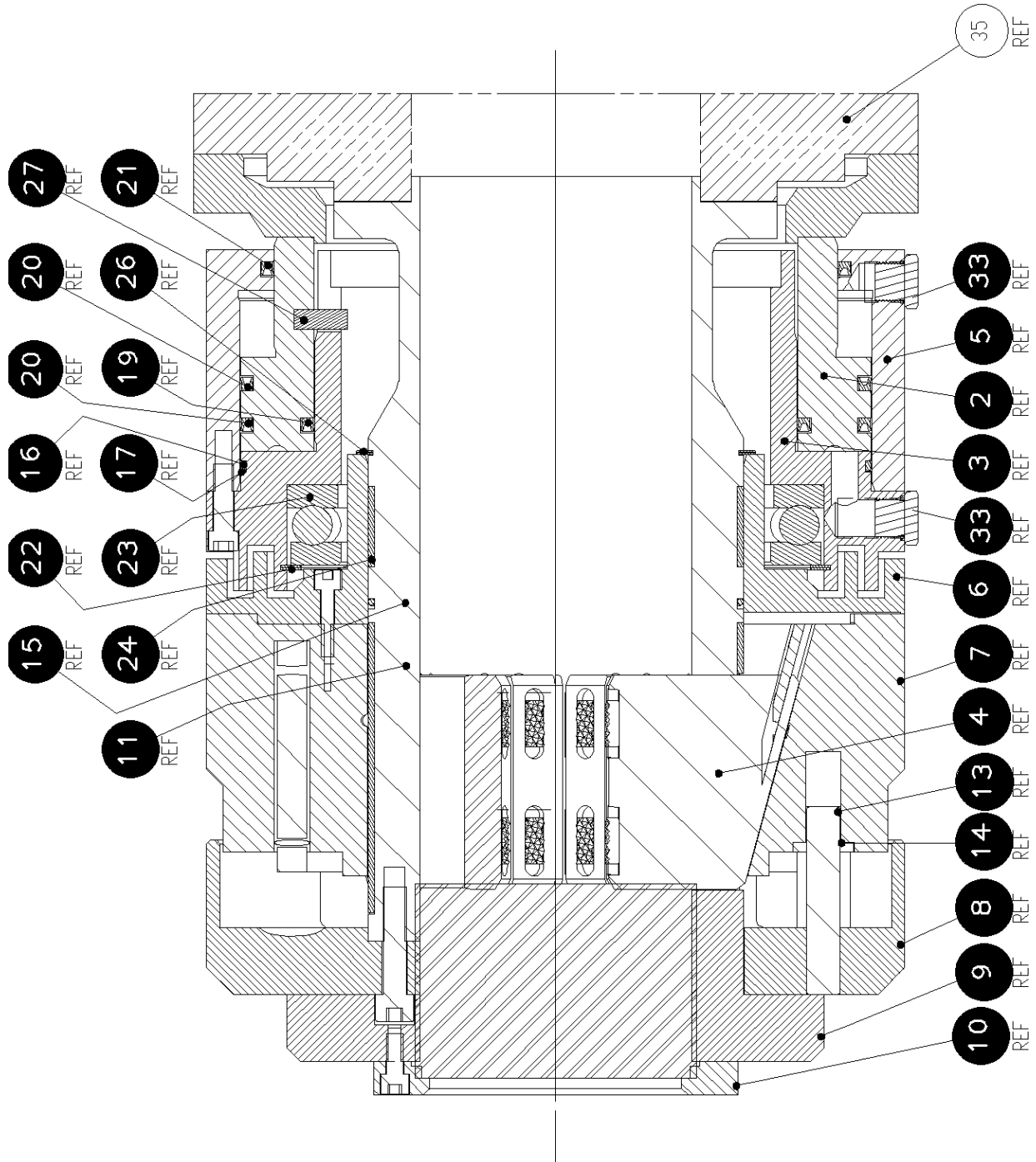
Note Items 36, 37, 38 Bushings - Reference only



BUMEKS®
GEAR INDUSTRY

DRILL HEAD, PQ

BMC.5404800 CHUCK ASM, PQ AFTER 2014





BUMEKS[®]
GEAR INDUSTRY

DRILL HEAD, PQ

BMC.5404800 CHUCK ASM, PQ AFTER 2014

Item	Part No.	Name	Qty	Service
Ref	5404800	NITRO-CHUCK ASM, PQ	1	B
REF	3543526	SEAL KIT, PQ CHUCK 5404800	1	A
1	5404326	MOUNTING PLATE, CHUCK	1	C
2	3543479	PISTON, PQ CHUCK NITRO	1	C
3	3543478	INNER CYLINDER, CHUCK NITRO	1	C
4	3546081	SPINDLE, PQ CHUCK 5.06 ID	1	C
5	3543480	CYLINDER, OUTER CHUCK NITRO	1	C
6	3543481	LABRINTH SEAL, CHUCK NITRO	1	C
7	3543515	BOWL, PQ CHUCK NITRO	1	C
8	3546083	RETAINER, SPRING PQ 5.06 ID	1	C
9	3546084	RETAINER, JAW PQ 5.06 ID	1	C
10	3543509	RETAINER, BUSHING GUIDE	1	B
11	3543514	SLEEVE, WEAR SPINDLE UPPER	1	B
12	17447	GREASE NIPPLE, STR 1/4-28 NPTF	10	F
13	5407485	GAS SPRING, STANDARD DUTY N/CHUCK (REFER TO SERVICE BULLETIN 5407576)	7	B
13A	5406961	SEAL KIT, GAS SPRING (NEW STYLE SPRING)	1	B
13B	5405231	SEAL KIT, GAS SPRING 5405230 (READ COMMENTS FOR COMPATABILITY)	1	X

Comments for Part Num. 5405231

NITROCHUCK / NITROCLAMP GAS SPRINGS WERE UPGRADED IN 2026, THIS SEAL KIT IS ONLY FOR USE FOR OLD STYLE SPRING 5405230

13C	5404930	TOOL KIT, GAS SPRING SERVICE	1	C
14	3543519	O-RING, SAE 133 BUNA-N 70D	7	F
15	3543503	O-RING, SAE 261 ID: 6-3/4" CS: 0.139 BUNA-N 70	1	A
16	3543505	O-RING, SAE 276 BUNA-N 70D	1	A
17	3543506	RING, BACKUP PQ CHUCK CYLINDER	1	A
18	3543510	DOWEL PIN, 1 x 3-1/2	3	B
19	3543500	CUP SEAL, INNER URETHANE	1	A
20	5406816	CUP SEAL, OUTER PISTON URETHANE	2	A
21	3543502	CUP SEAL, PISTON URETHANE	1	A



BUMEKS[®]
GEAR INDUSTRY

DRILL HEAD, PQ

BMC.5404800 CHUCK ASM, PQ AFTER 2014

Item	Part No.	Name	Qty	Service
22	3543499	CIRCLIP, SPIRAL INTERNAL 10"	1	B
23	3543496	BEARING, THRUST BALL PQ CHUCK	1	B
24	3543507	RING, SPINDLE WEAR LOWER	1	B
25	3543508	SEAL, GUIDE PIN OIL	3	A
26	3543524	CIRCLIP, SPIRAL EXTERNAL 7"	1	B
27	3547565	DOWEL PIN, GROOVED 3/8 DIA x 1 LG	3	B
28	3543521	S/SCR, SH 1/2-13 UNC x 1-1/4 F912 CUP PT BLK	3	F
29	44570	C/SCR, SH 3/8-16 UNC x 3/4 A574 ZF	4	F
30	44531	C/SCR, SH 1/2-13 UNC x 1-1/2 A574 ZF	7	F
31	47226	C/SCR, SH 1/2-20 UNF x 2 A574 BLK	14	F
32	46527	C/SCR, SH 3/8-16 UNC x 1-1/4 A574 ZF	27	F
33	39572	ADAP, HYD PLUG HH 8 MORB	2	F
36	3546862	BUSHING, GUIDE UPPER BQ 5.06 SPINDLE	1	C
37	3546861	BUSHING, GUIDE UPPER BW/NQ 5.06 SPINDLE	1	B
38	3546863	BUSHING, GUIDE UPPER NW/HQ 5.06 SPINDLE	1	B
39	3543494	JAW, BQ PQ-CHUCK	7	B
40	3543291	JAW, NQ PQ-CHUCK	7	B
41	3543290	JAW, HQ PQ-CHUCK	7	B
42	3543289	JAW, PQ PQ-CHUCK	7	B

Comments for Page: 5404800 CHUCK ASM, PQ AFTER 2014

ITEMS 14, 15, 16, 17, 19, 20, 21, 25 SUPPLIED IN CHUCK SEAL KIT # 3543526

ITEMS 34, 35, 39,40,41,42 NOT SUPPLIED WITH THIS ASSEMBLY - MUST BE ORDERED SEPARATELY

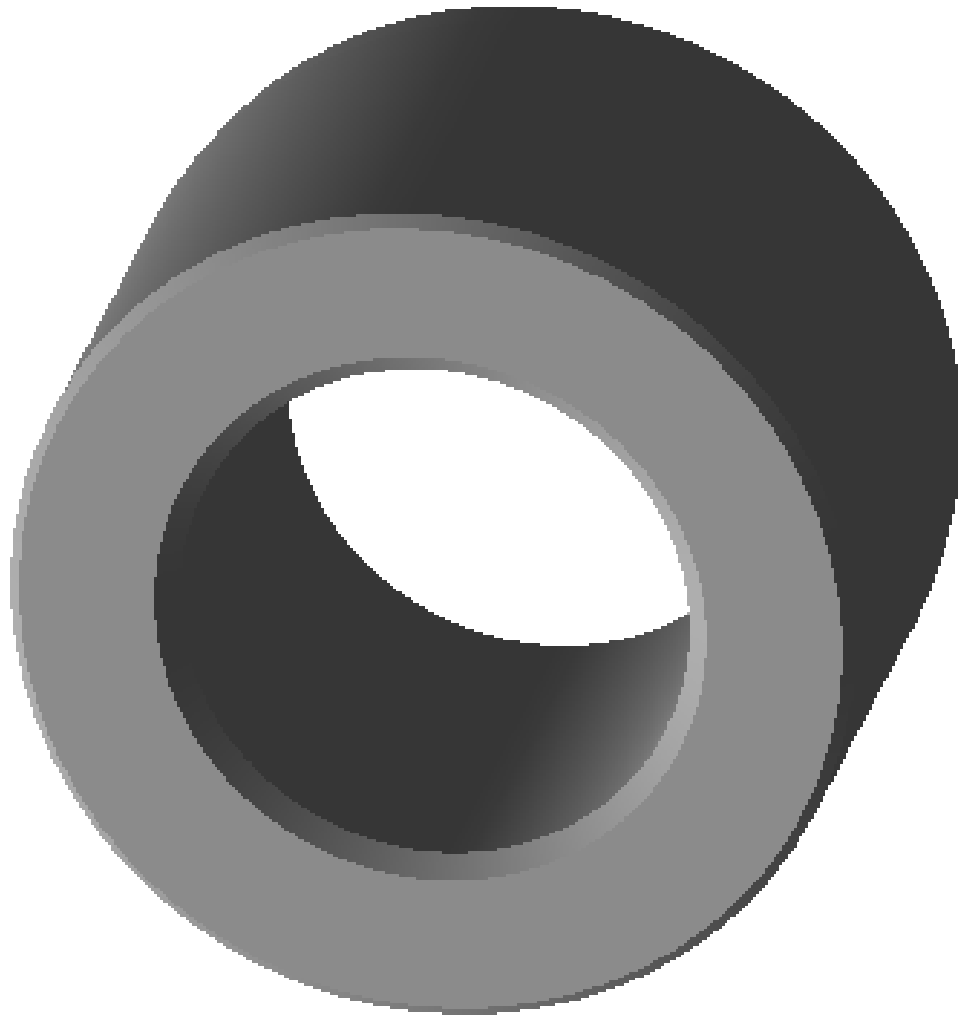
LUBRICATE CHUCK WITH ULTRA DUTY GREASE (14 OZ TUBE # 3543876)



BUMEKS®
GEAR INDUSTRY

DRILL HEAD, PQ

UPPER GUIDE BUSHING (5.06 SPINDLE)





BUMEKS[®]
GEAR INDUSTRY

DRILL HEAD, PQ

UPPER GUIDE BUSHING (5.06 SPINDLE)

Item	Part No.	Name	Qty	Service
1	3546862	BUSHING, GUIDE UPPER BQ 5.06 SPINDLE	1	C
2	3546861	BUSHING, GUIDE UPPER BW/NQ 5.06 SPINDLE	1	B
3	3546863	BUSHING, GUIDE UPPER NW/HQ 5.06 SPINDLE	1	B



BUMEKS®
GEAR INDUSTRY

DRILL HEAD, PQ

JAWS, NITRO-CHUCK, NITRO-CLAMP





DRILL HEAD, PQ

JAWS, NITRO-CHUCK, NITRO-CLAMP

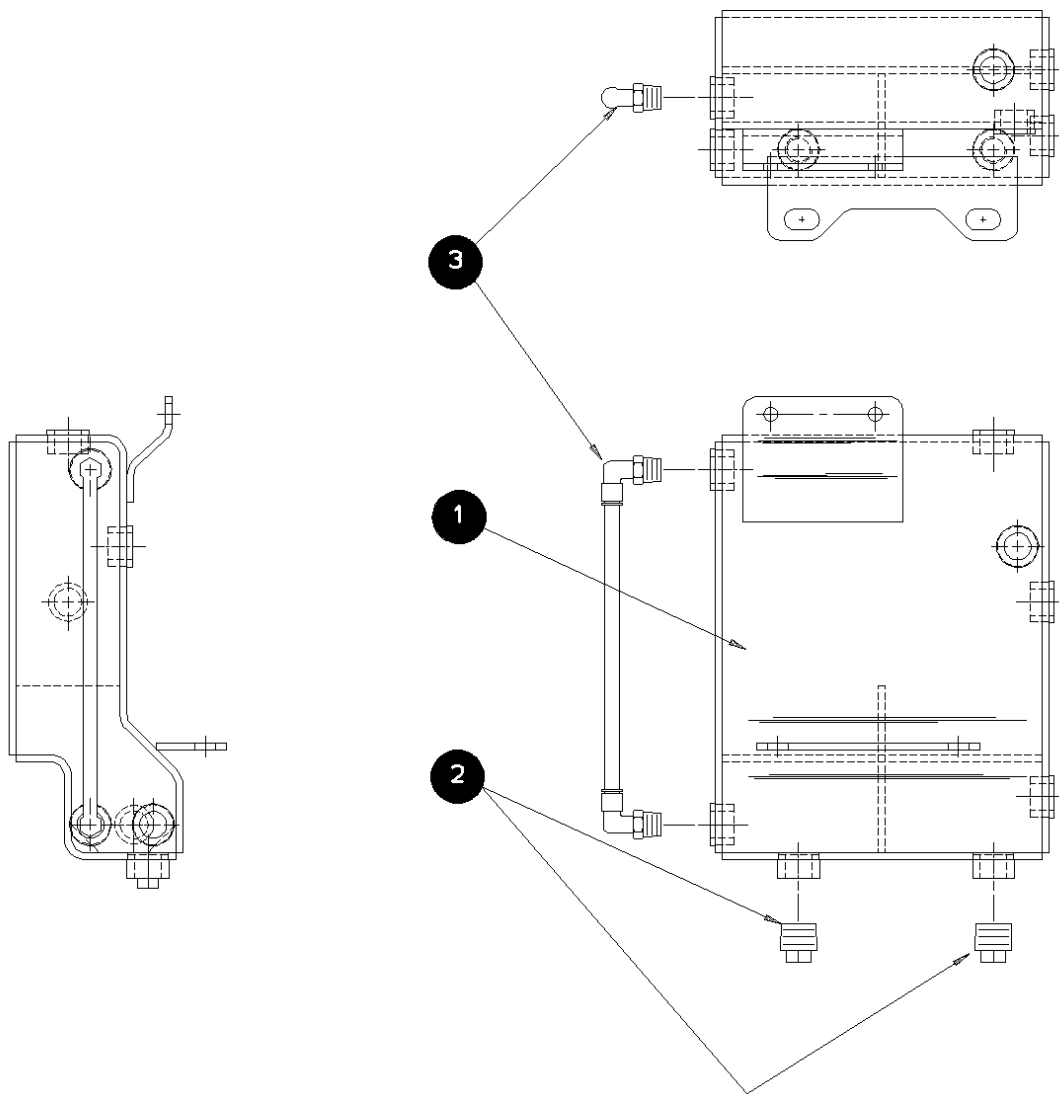
Item	Part No.	Name	Qty	Service
1	3543494	JAW, BQ PQ-CHUCK	7	B
2	3543291	JAW, NQ PQ-CHUCK	7	B
3	3543290	JAW, HQ PQ-CHUCK	7	B
4	3543289	JAW, PQ PQ-CHUCK	7	B



BUMEKS[®]
GEAR INDUSTRY

DRILL HEAD, PQ

BMC.3546873 RESERVOIR, PQ HEAD LUBRICATION



NOTE: TANK CAPACITY IS 2.6 GAL. (US)



BUMEKS[®]
GEAR INDUSTRY

DRILL HEAD, PQ

BMC.3546873 RESERVOIR, PQ HEAD LUBRICATION

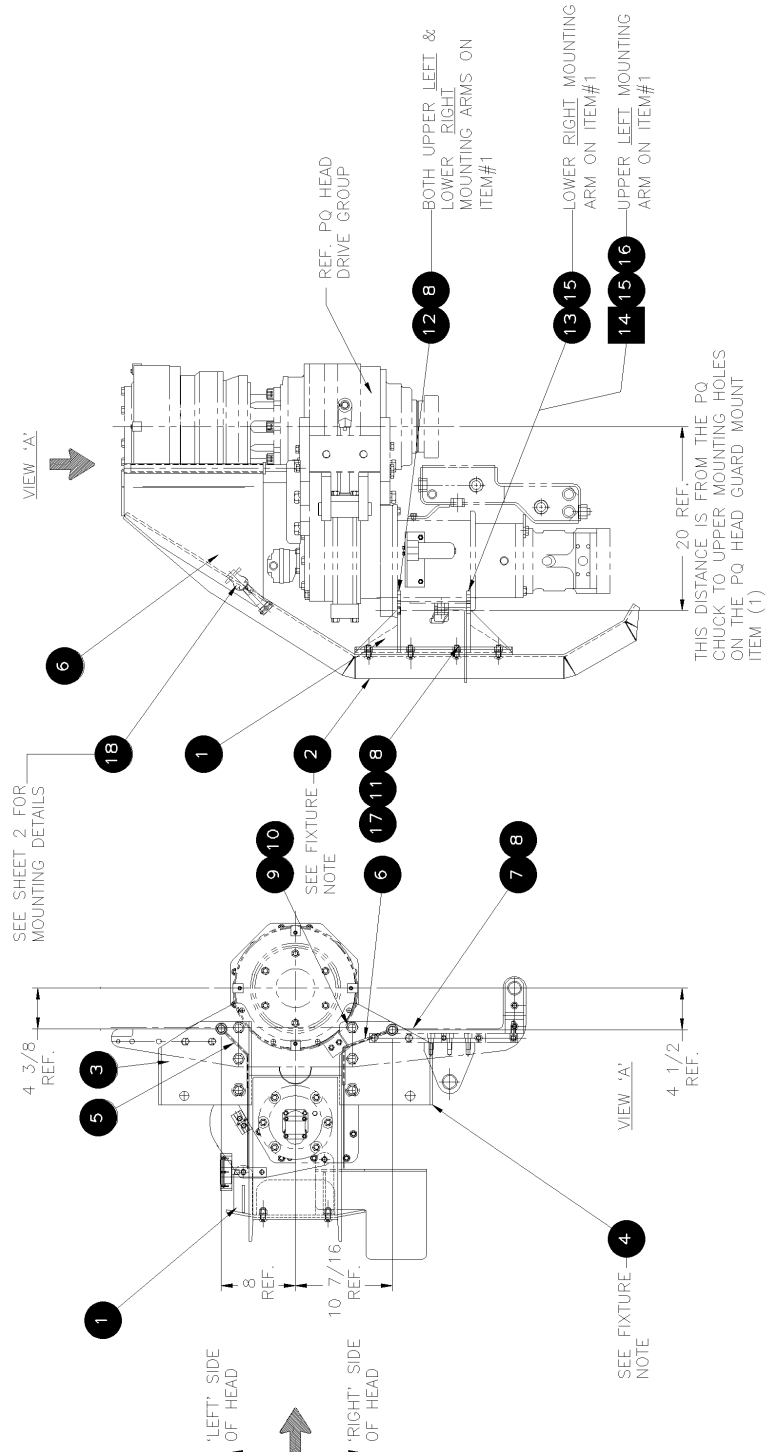
Item	Part No.	Name	Qty	Service
REF	3546873	RESERVOIR ASM, PQ HEAD LUBRICATION	1	E
1		RESERVOIR WELD'T, PQ HEAD LUBRICATION	1	E
2	3540054	PLUG, MAGNETIC SH 3/4 NPT SQ RECESS	2	D
3	3541761	SIGHT GAUGE ASM, RESERVOIR 14.5"	1	B



BUMEKS[®]
GEAR INDUSTRY

DRILL HEAD, PQ

BMC.3546708 GUARD GRP, LF230 PQ HEAD





BUMEKS[®]
GEAR INDUSTRY

DRILL HEAD, PQ

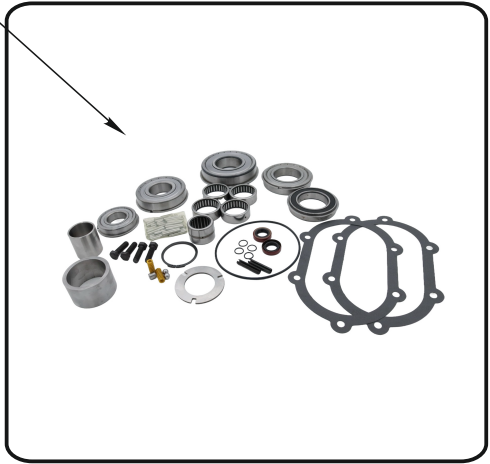
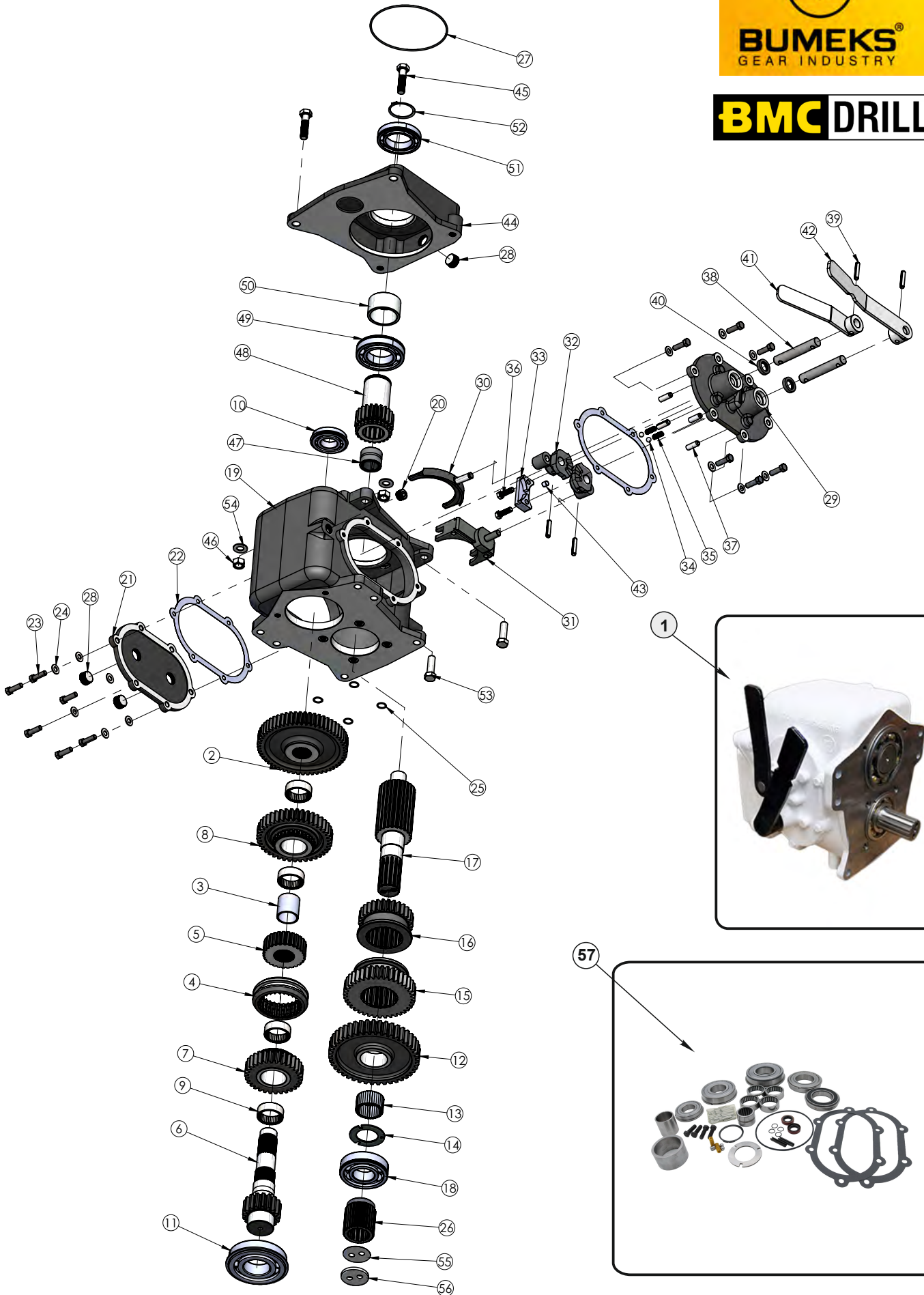
BMC.3546708 GUARD GRP, LF230 PQ HEAD

Item	Part No.	Name	Qty	Service
REF		GUARD GROUP, LF230 PQ HEAD	1	E
1	3542075	MOUNT, PQ HEAD GUARD	1	D
2	3542076	SLIDE, PQ HEAD GUARD	1	D
3	3546709	STEP, PQ HEAD GUARD LEFT	1	D
4	3546710	STEP, PQ HEAD GUARD RIGHT	1	D
5	3542079	WING, PQ HEAD GUARD LEFT (LEFT)	1	D
6	3542080	WING, PQ HEAD GUARD RIGHT (RIGHT)	1	D
7	44651	C/SCR, HH 1/2-13 UNC x 2-1/4 G8 ZP	4	F
8	44521	L/WASHER, SPLIT SPRING 1/2 ZP	10	F
9	44505	C/SCR, HH 3/4-10 UNC x 2-1/2 G8 ZP	6	F
10	44523	L/WASHER, SPLIT SPRING 3/4 ZP	6	F
11	3540856	C/SCR, BH 1/2- 13 UNC x 1-1/4 G8 ZP	4	F
12	44585	C/SCR, HH 1/2-13 UNC x 2 G8 ZP	2	F
13	3542266	C/SCR, HH 9/16-12 UNC x 2 G8 ZP	1	F
14	46088	C/SCR, HH 9/16-12 UNC x 3 G8 ZP	1	F
15	45784	L/WASHER, SPLIT SPRING 9/16 ZP	2	F
16	62904	NUT, HEX PLAIN 9/16-12 UNC G8 ZP	1	F
17	44525	NUT, HEX PLAIN 1/2-13 UNC G8 ZP	4	F
18	103010	FASTENER, RUBBER HOOD TIE DOWN	2	C
19	46074	C/SCR, HH 5/16-18 UNC X 1/2 G8 ZP	2	F
20	44610	WASHER, FLAT USS 5/16 G2 ZP	2	F
21	46502	M/SCR, BH #10-24 UNC x 1/2 G2 ZP	4	F
22	3540822	L/NUT, HEX NYLOC #10-24 UNC G5 ZP	4	F



BUMEKS
GEAR INDUSTRY

BMC DRILL



	Item #	Bumeks #	Board Longyear #	Description	Qty
	1	B000.000351	103815	HMD12700 COMPLETE TRANSMISSION	1
	2	B000.000351-12	95356	GEAR, COUNTERSHAFT	1
	3	B000.000351-17	95357	SLEEVE, BEARING	1
	4	B000.000351-16	95358	COLLAR, SHIFTING	1
	5	B000.000351-15	95359	GEAR	1
	6	B000.000351-11	95360	COUNTERSHAFT	1
	7	B000.000351-14	95361	GEAR, 2ND COUNTERSHAFT	1
	8	B000.000351-13	95362	GEAR, 3RD COUNTERSHAFT	1
	9	B000.000351-32	95363	NDL BEARING 2812 53.975 X 44,45 X 19,05 , ROLLER	4
	10	B000.000351-37	3549020	BEARING 6207 ZZ C372 X 35 X 17	1
	11	B000.000351-33	95365	BEARING 6311 ZZ120 X 55 X 29	1
	12	B000.000351-06	95366	GEAR, MAINSHAFT LO	1
	13	B000.000351-35	95367	ROLLER 4,725 X 31,45	34



BUMEKS®
GEAR INDUSTRY

BMC DRILL

	Item #	Bumeks #	Board Longyear #	Description	Qty
	14	B000.000351-06-1	3541202	WASHER, THRUST (REWORK)	1
	15	B000.000351-07	95369	GEAR, MAINSHAFT 2ND	1
	16	B000.000351-08	95370	GEAR, MAINSHAFT 3RD	1
	17	B000.000351-05	95371	SHAFT, MAIN	1
	18	B000.000351-34	95372	6309 ZZ C3100 X 45 X 25 BEARING, BALL	1
	19	B000.000351-01	5002674	HOUSING, TRANSMISSION REWORKED	1
	20	B000.000351-29	3540641	PLUG, MAGNETIC	1
	21	B000.000351-03	3540642	COVER, SIDE	1
	22	B000.000351-30	95377	GASKET, SIDE COVER	2
	23	B000.000351-42	44512	C/SCREW, HH 3/8 UNC X 1 LG	12
	24	B000.000351-43	95398	WASHER, SEALING 3/8" - 95398	12
	25	B000.000351-54	95378	O-RING - 95378	4
	26	B000.000351-10	3548809-306485	SPLINED ADAPTER - 3548809	1



BUMEKS®
GEAR INDUSTRY

HMD12700 Piston Pump

BMC DRILL

	Item #	Bumeks #	Board Longyear #	Description	Qty
	27	B000.000351-47	3540646	O-RING - 3540646	1
	28	B000.000351-28	3540643	PIPE PLUG, SIDE COVER NPT 3/4 13G - 3540643	3
	29	B000.000351-04	95402	CAP, SIDE SHIFT - 95402	1
	30	B000.000351-19	95403	FORK, 2ND & 3RD SHIFTER - 95403	1
	31	B000.000351-20	3542442	FORK, EXTENDED SLIDING - 3542442	1
	32	B000.000351-23	95405	SECTOR, SHIFTER - 95405	2
	33	B000.000351-21	95406	BLOCK, INHIBITOR - 95406	1
	34	B000.000351-40	95407	BALL - 95407	3
	35	B000.000351-52	3546620	DIE SPRING, EXTRA HEAVY-HEAVY 10 X 25 PSE - 3546620	2
	36	B000.000351-41	95409	C/SCREW, HH 5/8 UNF X 1" DRILLED HEAD - 95409	2
	37	B000.000351-26	95410	PIN, ROLL 5/16 DIA X 1.5 LG - 95410	4
	38	B000.000351-22	95411	SHAFT, SHIFT SELECTOR - 95411	2
	39	B000.000351-27	95413	PIN, ROLL 5/16 DIA X 1.5 - 95413	2

BMC DRILL

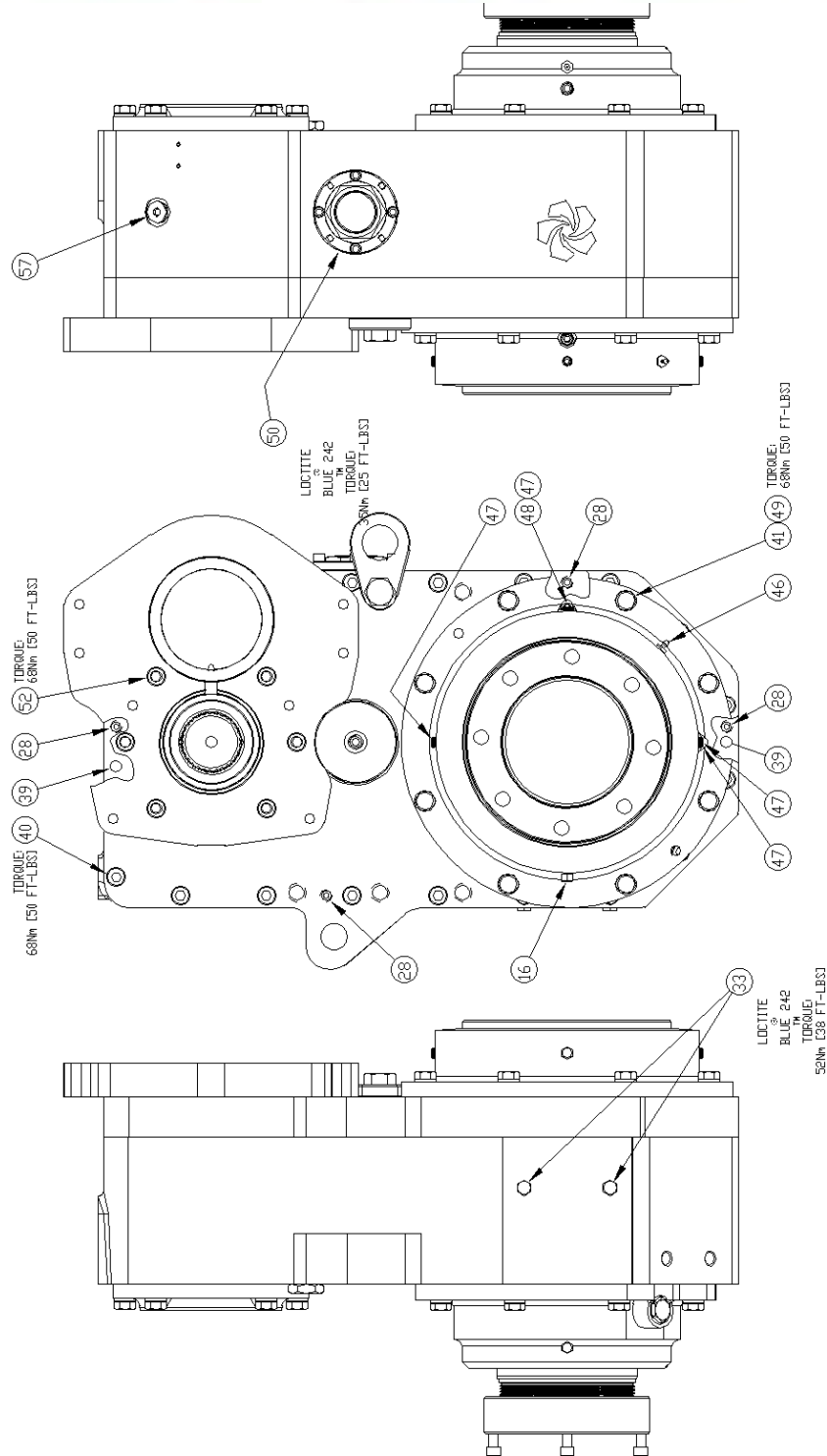
	Item #	Bumeks #	Board Longyear #	Description	Qty
	40	B000.000351-36	95414	19*32*7 TB2 NBR CHO SEAL, RING - 95414	2
	41	B000.000351-24	3541838	SHIFTER HANDLE, FUNK TRANSMISSION (1ST & 4TH) - 3541838	1
	42	B000.000351-25	3541839	SHIFTER HANDLE, FUNK TRANSMISSION (2ND & 3RD) - 3541839	1
	43	B000.000351-53	3546622	DISC, TRANSMISSION INTERLOCK - 3546622	1
	44	B000.000351-02	3549314	ADAPTER, MOTOR REWORK - 3549314	1
	45	B000.000351-48	95416	SCREW 9/16 UNC X 2.25 - 95416	2
	46	B000.000351-51	95417	9/16 UNC WASHER - 95417	2
	47	B000.000351-31	79792	NDL BEARING HJ-202820 44,45X 31,75 X 31,75 , TRANSMISSION PILOT - 79792	1
	48	B000.000351-09	3540645	GEAR, INPUT SHAFT - 3540645	1
	49	B000.000351-38	95418	BEARING, BALL 6211 ZZ C3 100 X 55 X 21 - 95418	1
	50	B000.000351-18	95419	SPACER, BEARING - 95419	1
	51	B000.000351-39	95420	BEARING 6011 EE C3 90 X 55 X 18 - 95420	1
	52	B000.000351-44	95421	RING, SNAP - 95421	1
	53	B000.000351-49	95422	SCREW 9/16 UNC X 1.75 - 95422	2
	54	B000.000351-50	95423	WASHER - 95423	4
	55	B000.000351-45	103281	SHIM, CPN FLG - 103281	6
	56	B000.000351-46	95389	RETAINER - 95389	1
	57	B000.3541060	3541060	OVERHOUL KIT, FUNK TRANS HMD12700	1



BUMEKS®
GEAR INDUSTRY

DRILL HEAD, PQ

BMC.3547367 HEAD ASM, BASIC





BUMEKS[®]
GEAR INDUSTRY

DRILL HEAD, PQ

BMC.3547367 HEAD ASM, BASIC

Item	Part No.	Name	Qty	Service
REF	3547367	3547367 HEAD ASM, BASIC	1	X
Comments for Part Num. 3547367				
THIS HEAD CONFIGURATION IS NOW OBSOLETE, TALK TO YOUR TECHNICAL SERVICE GROUP TO ORDER THE MOST RECENT VERSION. LUBE SYSTEM HAS BEEN UPGRADED				
REF	5000545	OVERHAUL KIT, PQ HEAD MAJOR (INCLUDES SEAL KIT)	1	C
REF	5000405	SEAL KIT, BASIC HEAD	1	B
1		HOUSING, MAIN	1	E
2	3547369	COVER, HOUSING	1	D
3	3547368	CARRIER, TRANSMISSION INPUT	1	D
4	306476	CAP, BEARING UPPER OUTPUT	1	D
5	306477	CAP, BEARING LOWER OUTPUT	1	D
6	3547372	COVER, PUMP MOUNTING	1	D
7	3547404	O-RING, SAE 237 BUNA N 70D	1	A
8	306468	GEAR, OUTPUT	1	C
9	3547371	SHAFT, INTERMEDIATE - IDLER	1	C
10	3546756	SPINDLE ASM, PQ HEAD 5.06 ID	1	C
11	306466	PINION AND SHAFT-INPUT	1	C
12	306481	SPACER, INTERMEDIATE	1	C
13	3547370	PLATE, INTERMEDIATE LOCK	1	D
14	306483	RING-INNER LOCK	1	C
15	306484	RING-OUTER LOCK	1	C
16	5006702	GREASE FITTING, RELIEF 1/8 NPT	2	F
17	306487	SHIM-.005 THICK	3	A
18	306488	SHIM-.007 THICK	3	A
19	306489	SHIM-.020 THICK	1	A
20	3548734	O-RING, SAE 276 VITON 75D	1	A
21	44661	S/SCR, SH 1/4-20 UNC x 3/4 F912 CUP PT ZP	2	F
22	3546085	NUT REWORK, SPINDLE PQ HEAD	1	C
23	306493	SPACER-OUTPUT	1	D
24	3548735	O-RING, SAE 270 VITON 75D	1	A



BUMEKS[®]
GEAR INDUSTRY

DRILL HEAD, PQ

BMC.3547367 HEAD ASM, BASIC

Item	Part No.	Name	Qty	Service
25	306585	BEARING CUP, TAPERED ROLLER OD 5.75	2	C
26	306587	BEARING CONE, TAPERED ROLLER ID 3.625"	2	C
27	3540433	GEAR ASM, INTERMEDIATE PQ HEAD	1	C
28	45676	S/SCR, SH 1/2-13 UNC x 3/4 F912 CUP PT ZP	4	F
29	306590	BEARING CUP, TAPERED ROLLER OD 8.875"	1	C
30	306592	BEARING CONE, TAPERED ROLLER ID 6.25"	1	C
31	306593	BEARING CUP, TAPERED ROLLER OD 9.75	1	C
32	306594	BEARING CONE, TAPERED ROLLER ID 6.875"	1	C
33	44538	C/SCR, HH 3/8-16 UNC x 1/2 G8 ZP	2	F
34	306599	SEAL, OIL ID 5.75" OD 6.625"	2	A
35	306600	SEAL, OIL ID 8.5" OD 9.75	2	A
36	48761	O-RING, SAE 235 BUNA-N 70D	1	A
37	306603	CIRCLIP, EXTERNAL 6.75"	1	C
38	3548736	O-RING, SAE 257 VITON 75D	2	A
39	26843	DOWEL PIN, 1/2 DIA X 1-3/4 LG	2	F
40	46102	C/SCR, SH 1/2 UNC x 1-3/4 A574 ZF	19	F
41	44510	C/SCR, HH 1/2-13 UNC X 1-1/2 G8 ZP	24	F
42	3540054	PLUG, MAGNETIC SH 3/4 NPT SQ RECESS	1	D
43	306608	C/SCR, HH 3/8-16 UNC x 1-1/4 DRILLED HEAD	6	C
44	39572	ADAP, HYD PLUG HH 8 MORB	1	F
45	44766	WIRE, O.47 DIA SAFETY	A/R	A
46	16634	GREASE FITTING, STR 1/8-27 NPT	2	F
47	100976	ADAP, HYD PLUG SH 2 MP	4	F
48	22079	ADAP, HYD PLUG SH 1/4 NPT	3	F
49	44521	L/WASHER, SPLIT SPRING 1/2 ZP	22	F
50	5404464	COVER ASM	1	D
51	28051	ADAP, HYD PLUG SH 3/4 MP	2	F
52	44531	C/SCR, SH 1/2-13 UNC x 1-1/2 A574 ZF	6	F
53	3541286	LUG, LIFTING	1	D
54	46098	C/SCR, HH 3/4-10 UNC x 1-1/2 G8 ZP	1	F



DRILL HEAD, PQ

BMC.3547367 HEAD ASM, BASIC

Item	Part No.	Name	Qty	Service
55	44570	C/SCR, SH 3/8-16 UNC x 3/4 A574 ZF	4	F
56	35596	ADAP, HYD PLUG HH 12 MORB	1	F
57	49229	ADAP, HYD PLUG SH 8 MORB	1	F

Comments for Page: 3547367 HEAD ASM, BASIC

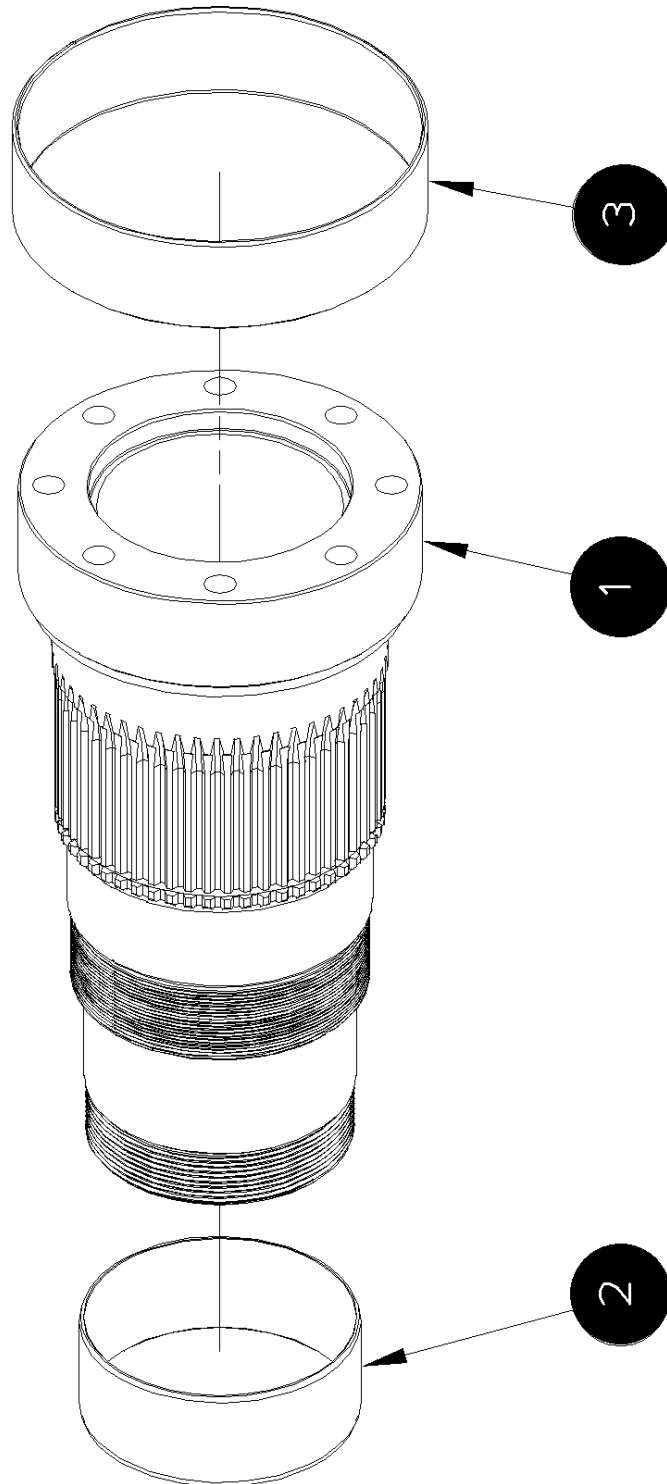
ITEMS 7, 17, 18, 19, 20, 24, 34, 35, 36, 38, 45 ARE INCLUDED IN GEARBOX SEAL KIT #5000405 AND OVERHAUL KIT 5000545



BUMEKS[®]
GEAR INDUSTRY

DRILL HEAD, PQ

BMC.3546756 SPINDLE ASM, PQ HEAD 5.06 ID





BUMEKS[®]
GEAR INDUSTRY

DRILL HEAD, PQ

BMC.3546756 SPINDLE ASM, PQ HEAD 5.06 ID

Item	Part No.	Name	Qty	Service
Ref	3546756	SPINDLE ASM, PQ HEAD 5.06 ID	1	C
1		SPINDLE, (BARE) ORDER ASM 3546756	1	E
2	3546752	WEAR SLEEVE, PQ SPINDLE SMALL	1	B
3	306494	WEAR SLEEVE, PQ SPINDLE LARGE	1	B




This brochure contains general information and pictures about BUMEKS GEAR CO.LTD. and its products. They might be subject to change and modification. Bumeks Gear reserves the right to change specifications and design of its products without notice. While Bumeks Gear products are of high quality, they are not originals. Bumeks Gear doesn't have any affiliation to OEM companies and brands described in this brochure. All the OEM numbers and trademark names are used for reference purposes only and belong to their respective owners.



BUMEKS®

BMC DRILL



Büyükkayacık Osb Mah. 407 Nolu sk. No : 4 Selçuklu / Konya

 +90 505 039 45 67

 eng/esp : sales3@bumeks.com.tr

 +90 505 911 21 42

 русский : sales2@bumeks.com.tr

 www.bumeks.com.tr  info@bmcd drill.com